



# District Surface Water Use, Deep Well Production and SGMA Update

Eric Thorburn, P.E.  
Water Operations Manager/District Engineer  
April 2, 2024

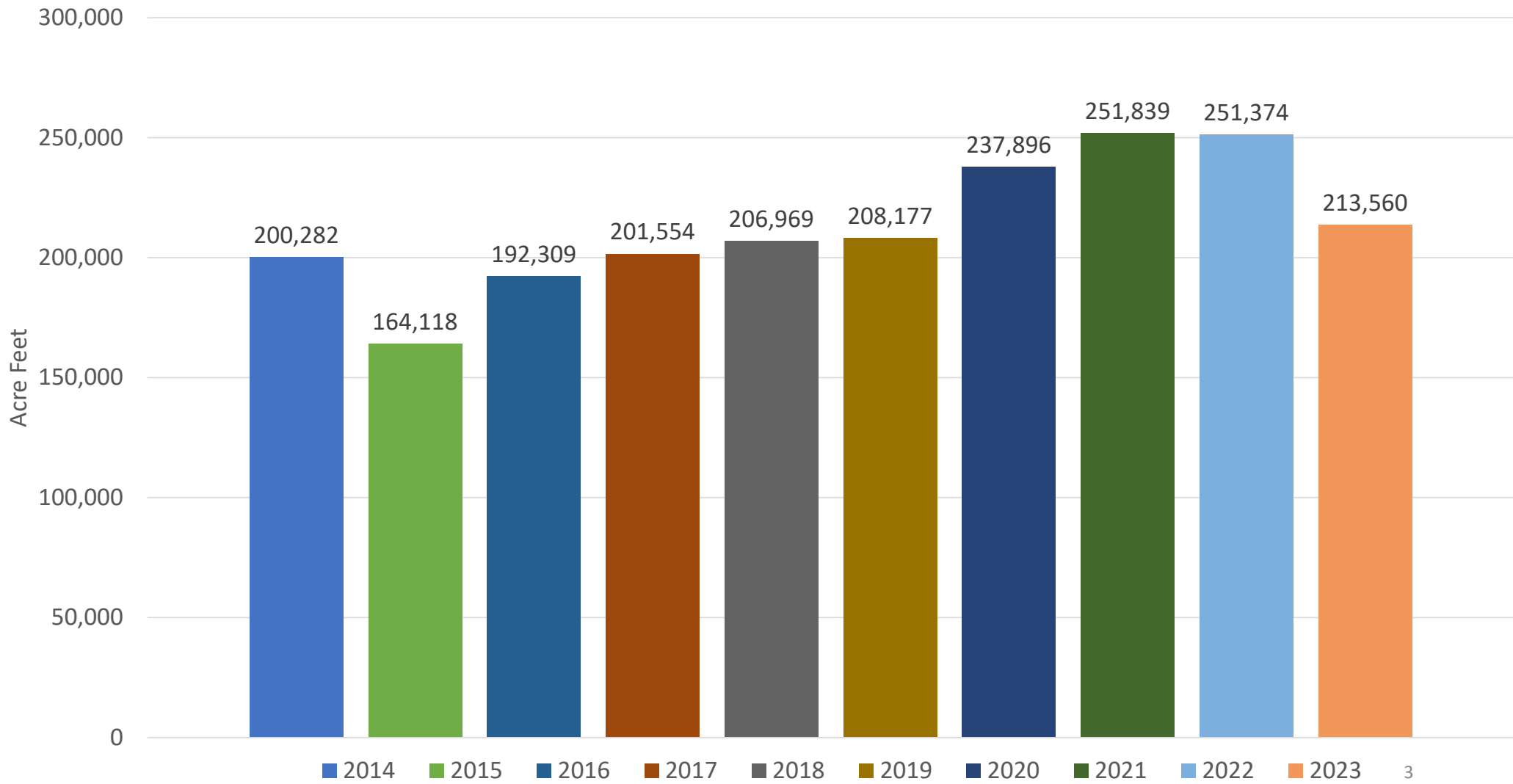
## OID SURFACE WATER USE AND DEEP WELL PRODUCTION SUMMARY

Year	*Surface Water Diversions	October Surface Water Diversions	District Groundwater Pumping	Out of District Water Use
<b>2022</b>	<b>251,374</b>	<b>20,781</b>	<b>1,579</b>	<b>1,883</b>
<b>2023</b>	<b>213,560</b>	<b>15,711</b>	<b>1,331</b>	<b>5,966</b>
Avg. 2014-23	212,808	14, 880	4,836	**3,792
Avg. 2018-22	232,569	18,483	1,713	4,635

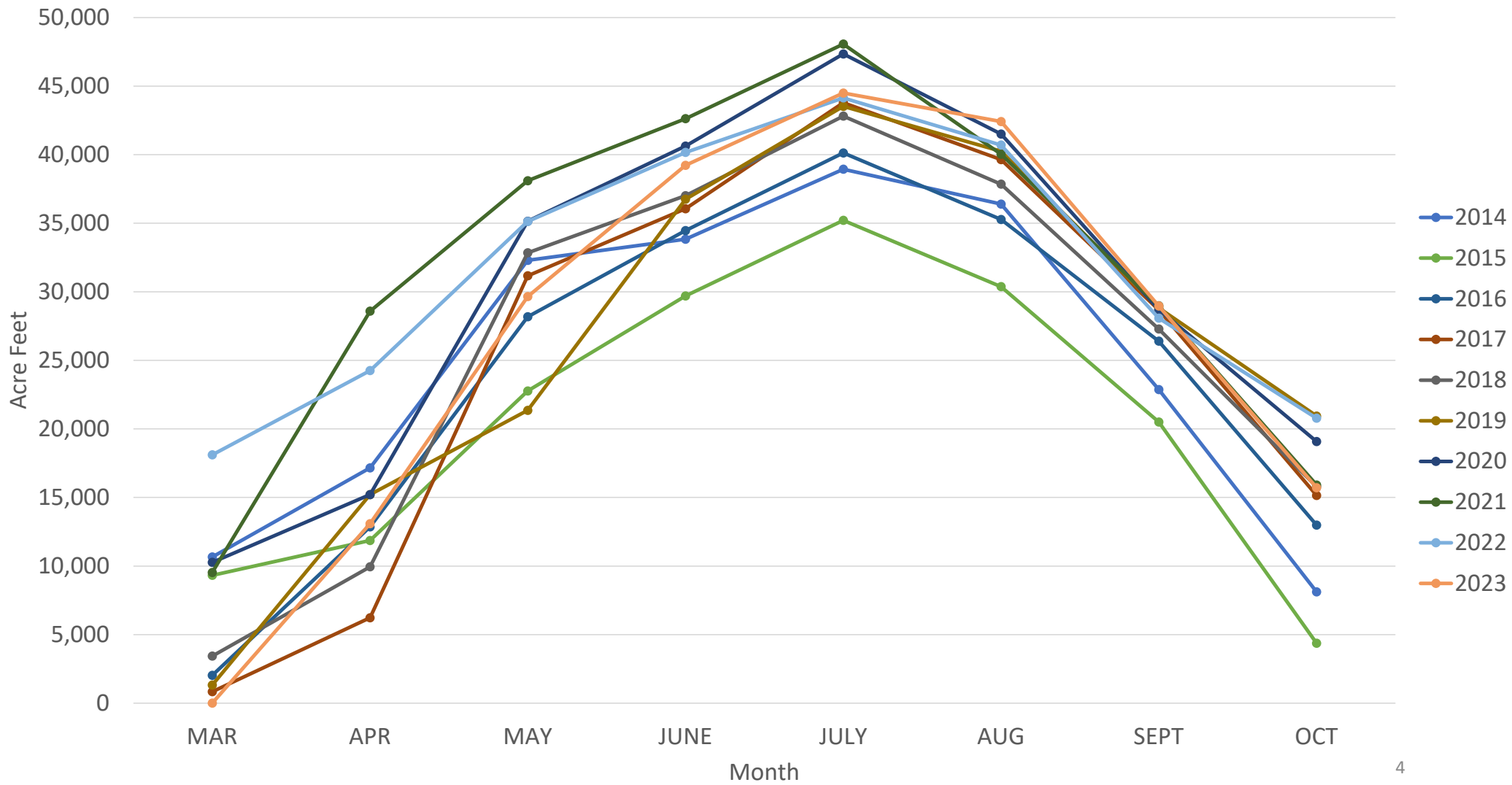
\*Calendar year surface water diversions.

\*\*Prior to 2014, volumetric billing was optional for out of district water deliveries. As such, out of district volumetric deliveries were not tracked in all cases. This represents the Avg. 2015-23.

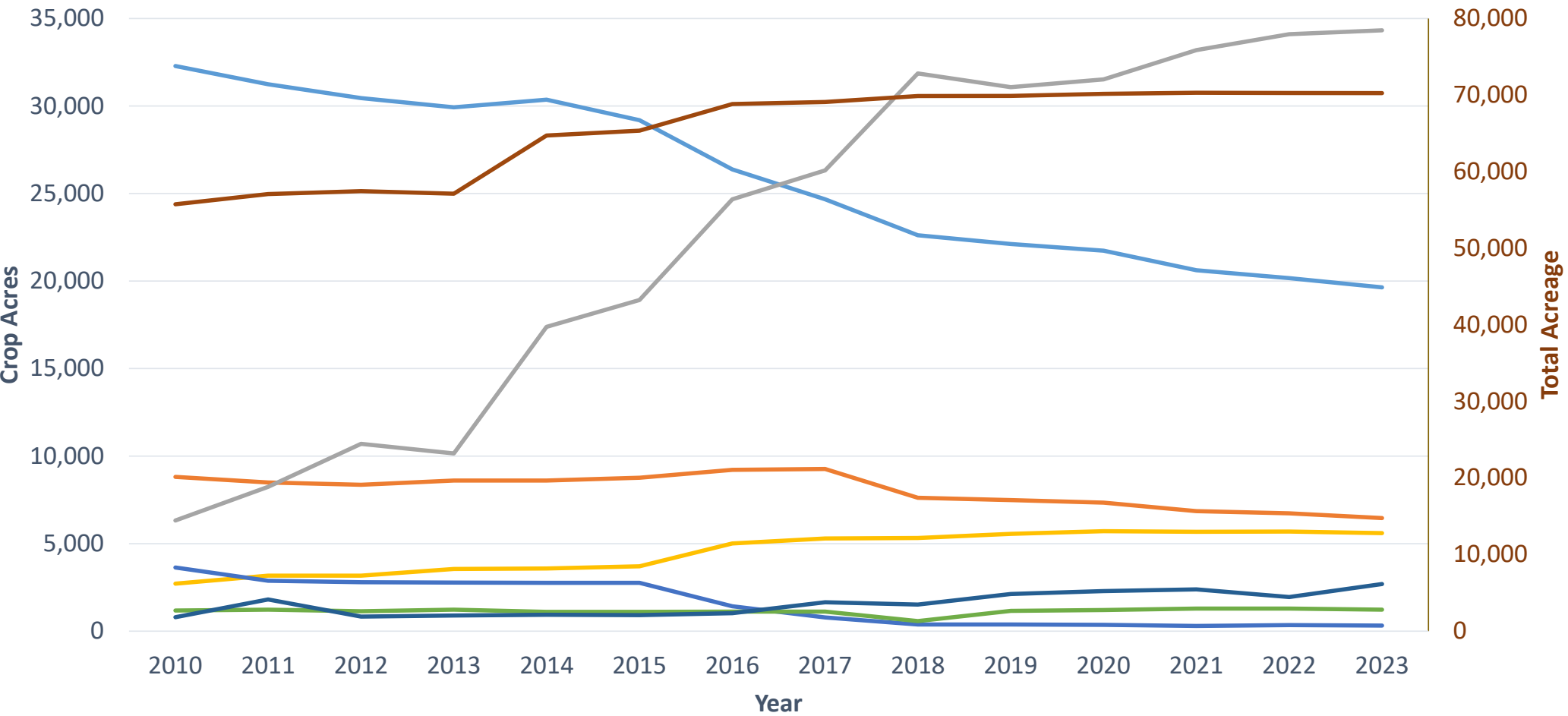
### OID Surface Water Diversions by Year (10-Yr)



OID Surface Water Diversions by Month (10-Yr)

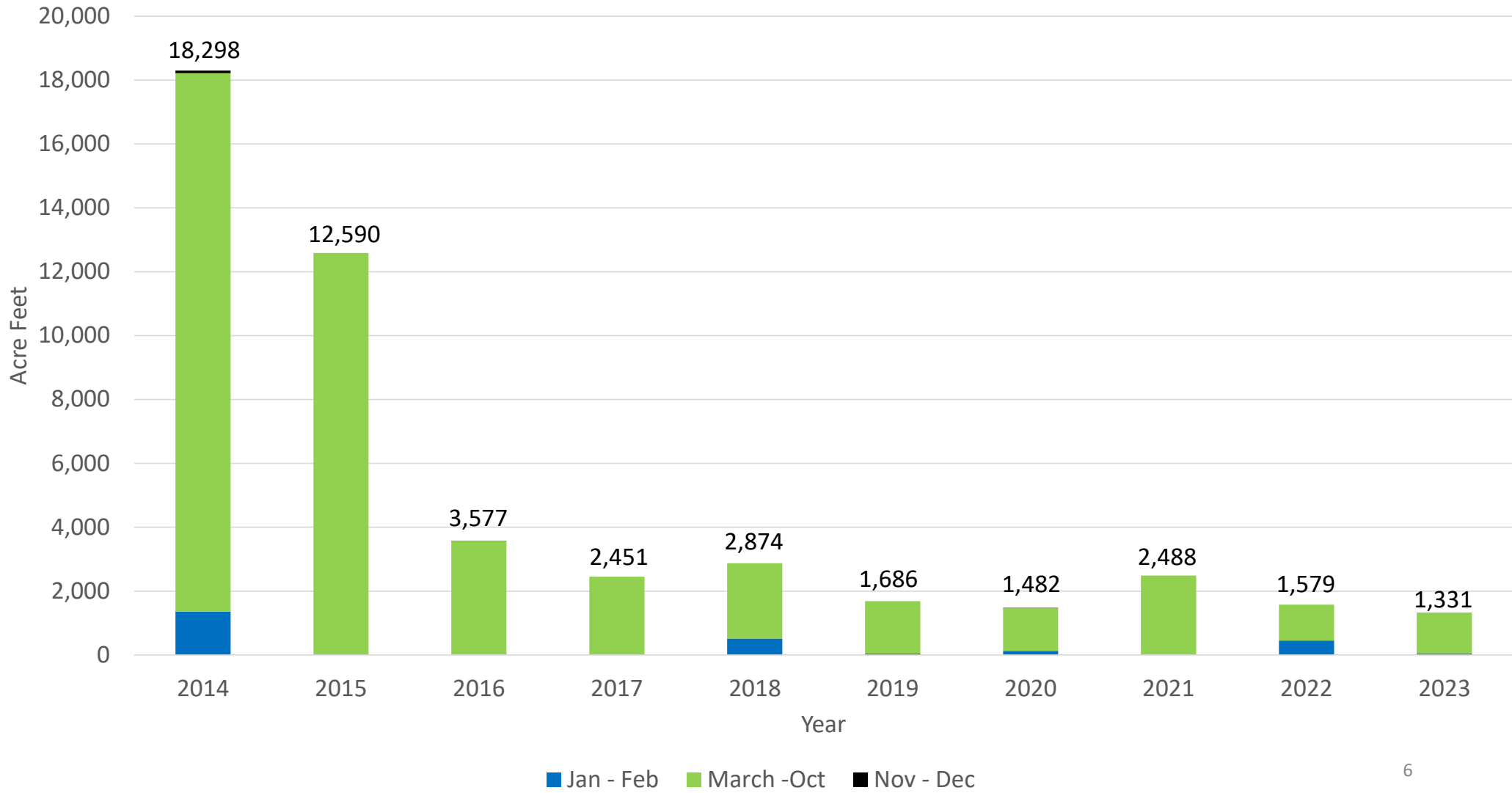


## OID Crop Progression

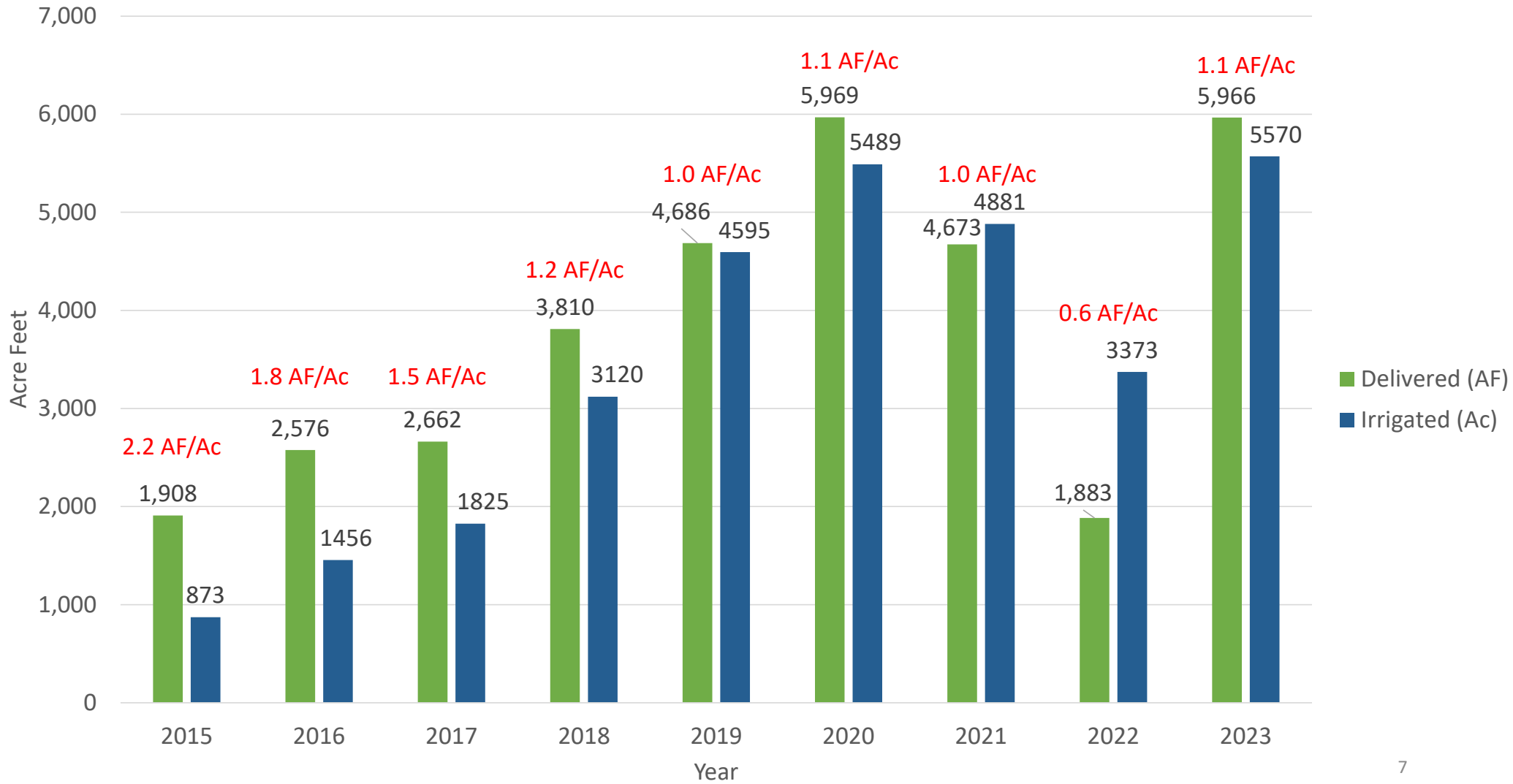


— Pasture   
 — Oats and Corn   
 — Almonds   
 — Walnuts   
 — Rice   
 — Other   
 — Idle   
 — Total

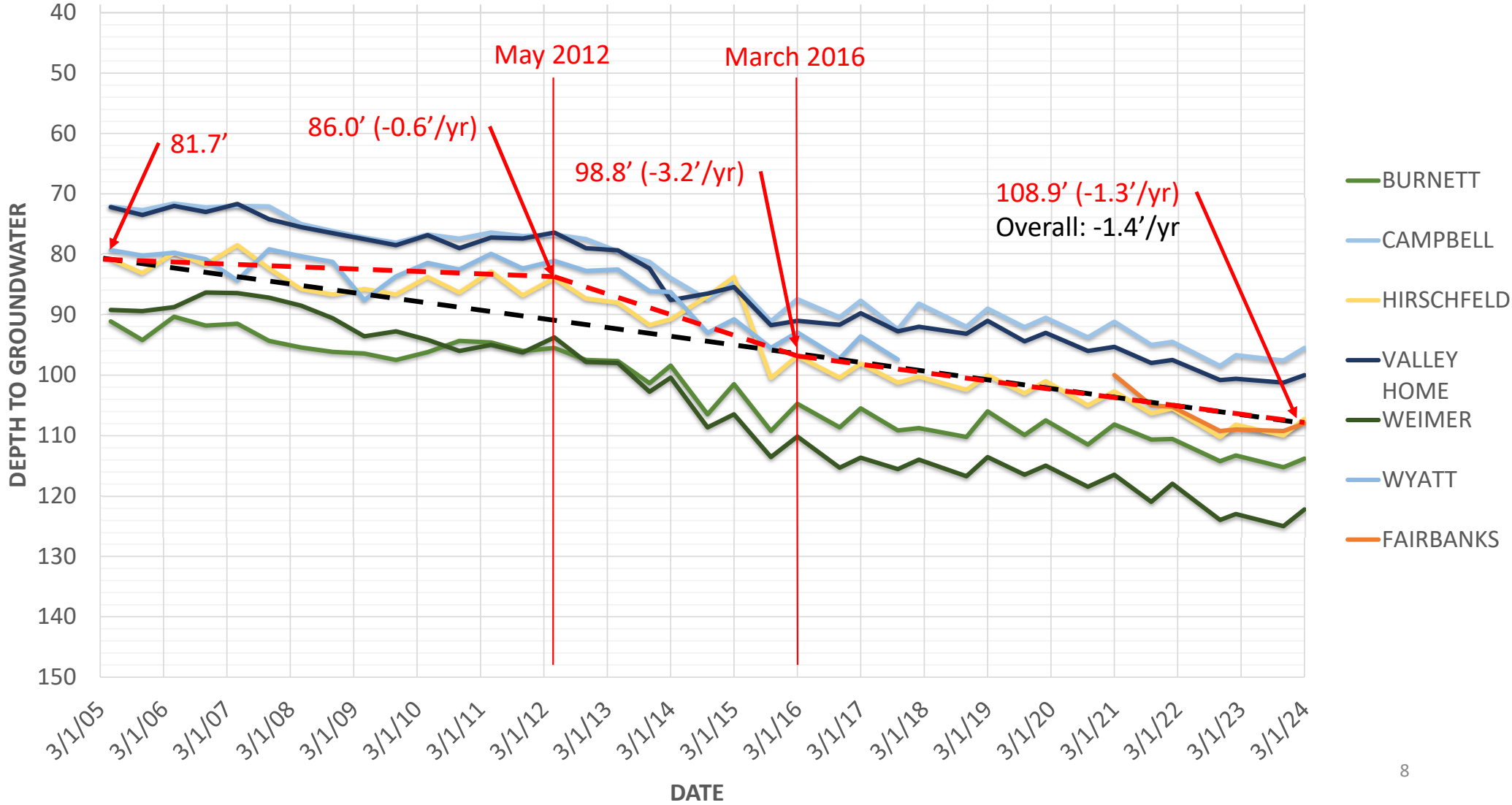
### OID GW Pumping (10-Yr)



# Out of District Water Deliveries

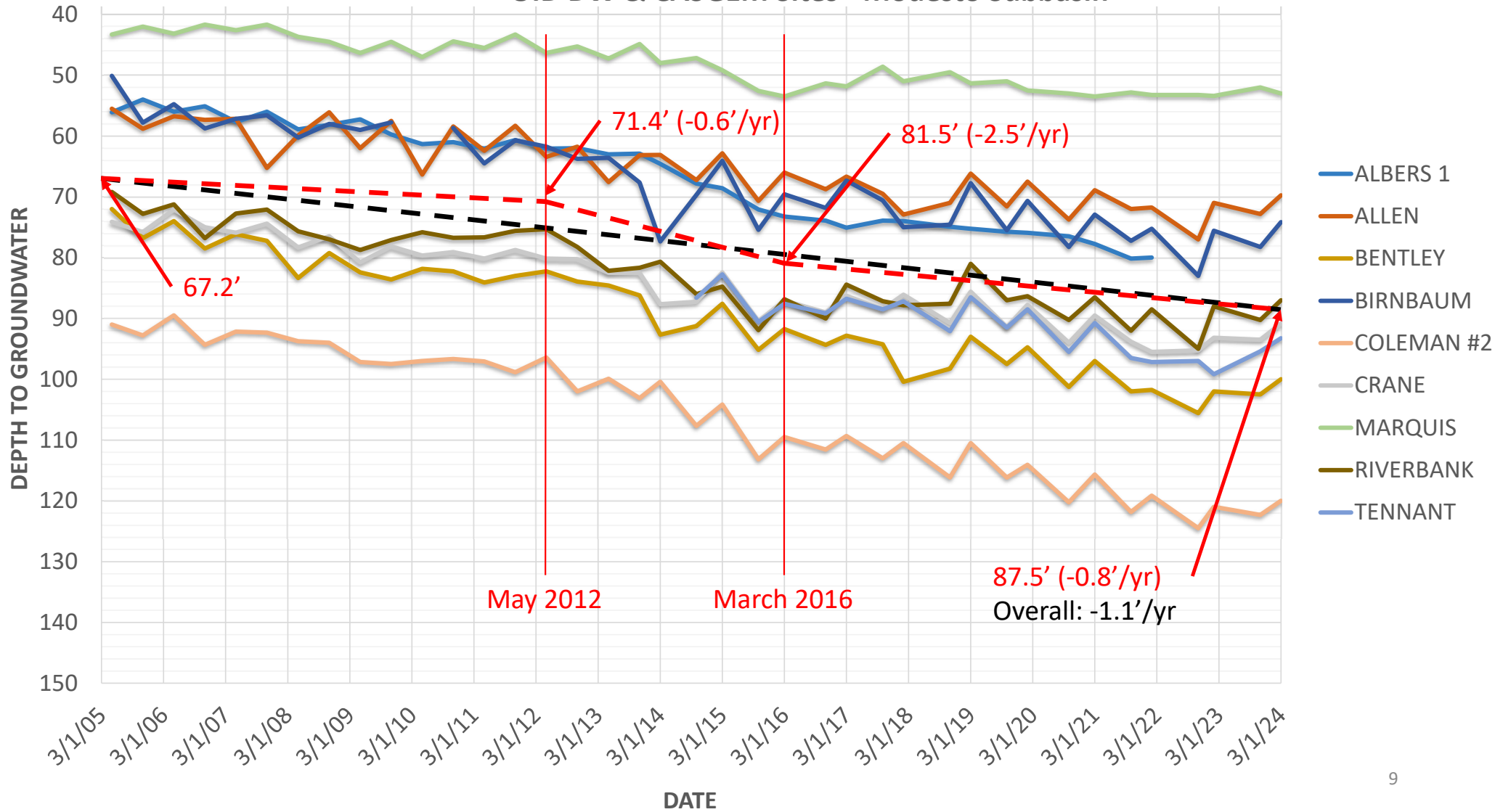


### OID DW & CASGEM Sites - ESJ Subbasin

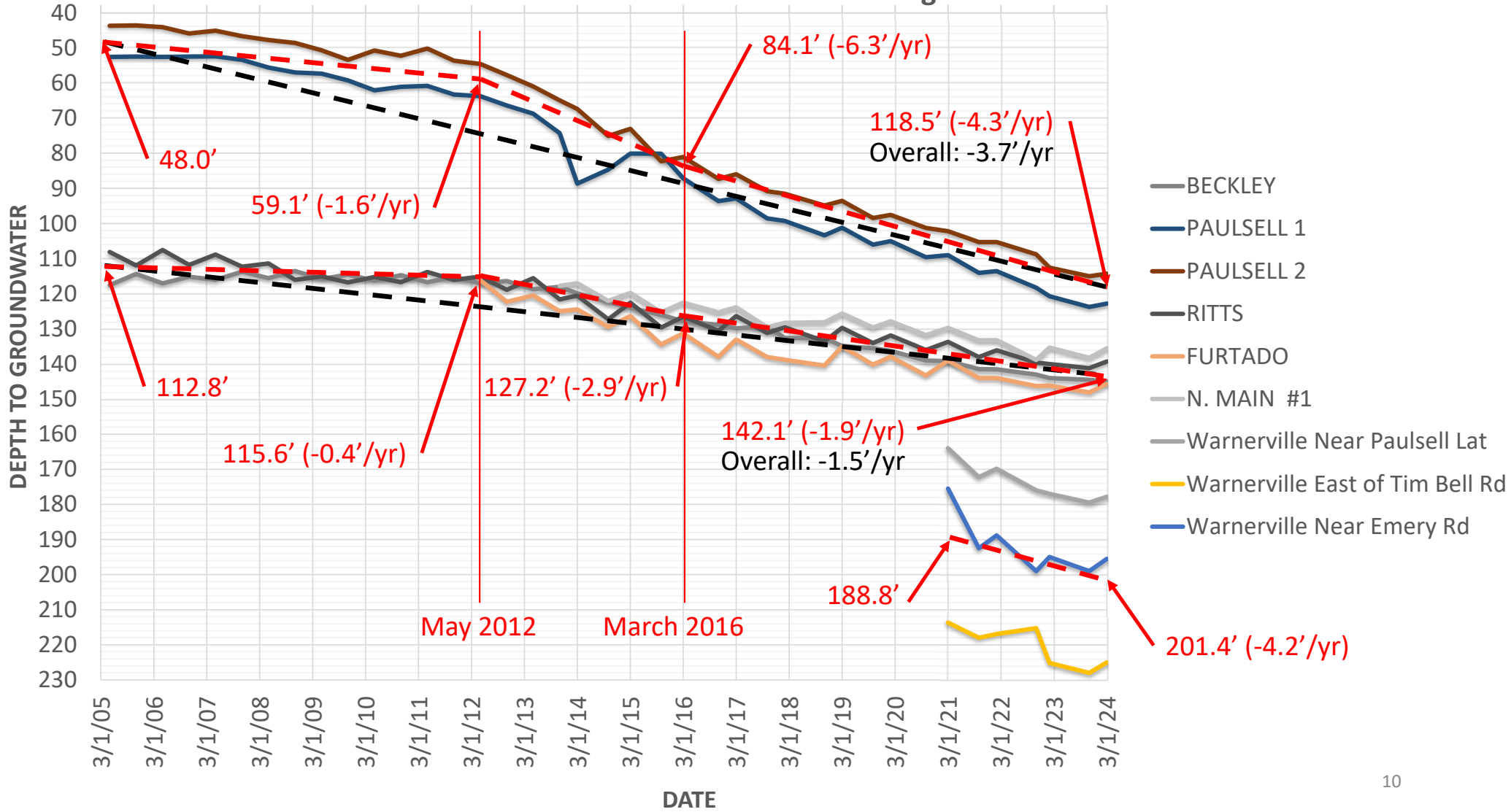




### OID DW & CASGEM Sites - Modesto Subbasin



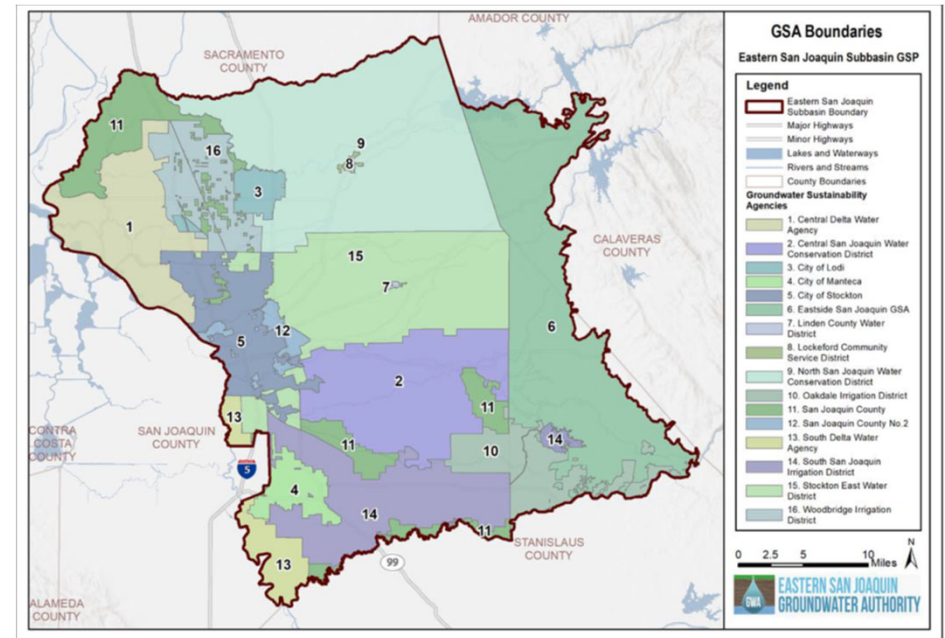
### OID East Side & NDE Monitoring Wells



# Sustainable GW Management Act (SGMA) Update

## Eastern San Joaquin GW Subbasin 16 GSAs (707k ac) - north of the Stanislaus River

- GSP submitted Jan. 2020 (revised July 2022)
  - Approved March 2023
- 5-year GSP update due Jan. 2025
  - Well Mitigation Plan
- 2023 WY Annual Report (5<sup>th</sup>) - Submitted April 1<sup>st</sup>
  - Continued water level decline
    - No wells below the MTs
- Projects
  - OID 10-Yr OOD Water Sale Program – 2<sup>nd</sup> Year
  - 10-year OID & SSJID transfer to SEWD
    - Up to 20k AF in dry years, 10k AF in critically dry years



# Sustainable GW Management Act (SGMA) Update

## Modesto GW Subbasin

### 1 GSA (250k ac) - south of the Stanislaus River

- GSP submitted Jan. 2022
  - Deemed incomplete by DWR Jan. 2024
    - Impact Analysis & Well Mitigation Plan
    - Potential Management Action Framework/Plan
- 2023 WY Annual Report (3<sup>rd</sup>) - Submitted April 1<sup>st</sup>
  - Modesto Basin change in storage = 77,800 AF (0.3')
    - Oakdale Area Net Recharge = 29,700 AF
    - NDE Area Net Recharge = -70,500 AF
  - Continued water level decline primarily in NDE
    - 70% RMWs above MTs in Eastern Principal Aquifer
    - No wells below IMs
- County led NDE Modesto Subbasin landowner workshop #2 – Held Dec. 13<sup>th</sup>
  - Focused on overdraft in NDE and MAs in other subbasins
- Projects
  - OID 10-Yr OOD Water Sale Program – 2<sup>nd</sup> Year
  - \$14.4M SGM Implementation Grant Application – OID Paulsell Lat. Expansion
  - MID GW Replenishment Program – Workshops at 5:30 pm on 4/23 (MID) & 4/24 (Waterford City Hall)

