

District Surface Water Use and Deep Well Production Update

Eric Thorburn, P.E.
Water Operations Manager/District Engineer
January 19, 2021

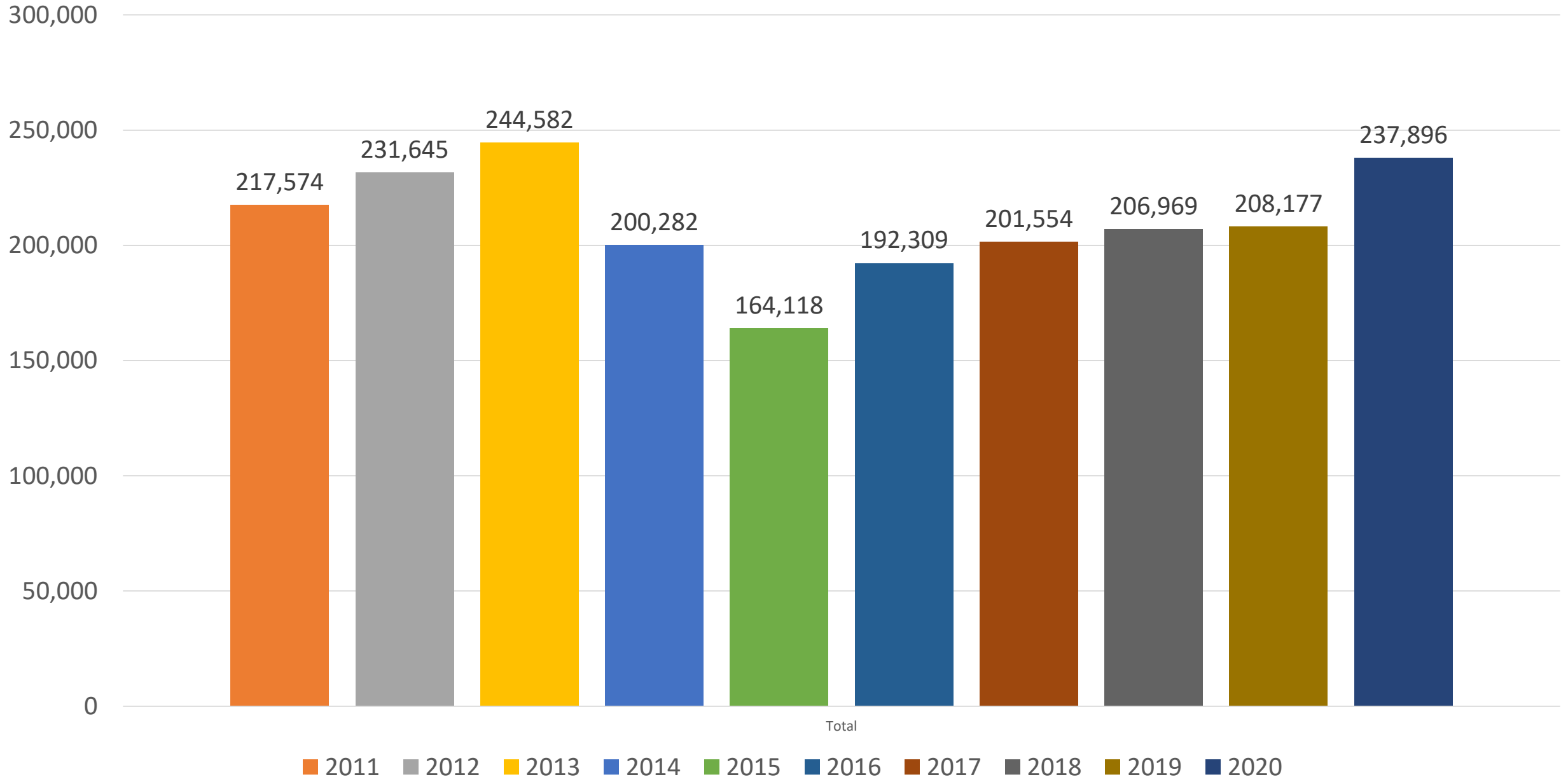
OID SURFACE WATER USE AND DEEP WELL PRODUCTION SUMMARY

Year	*Surface Water Diversions	October Surface Water Diversions	District Groundwater Pumping	Out of District Water Use
2019	208,177	20,941	1,686	4,686
2020	237,896	19,077	1,482	5,969
Avg. 2011-20	210,511	12,346	6,154	**
Avg. 2016-20	209,381	16,785	2,414	3,941

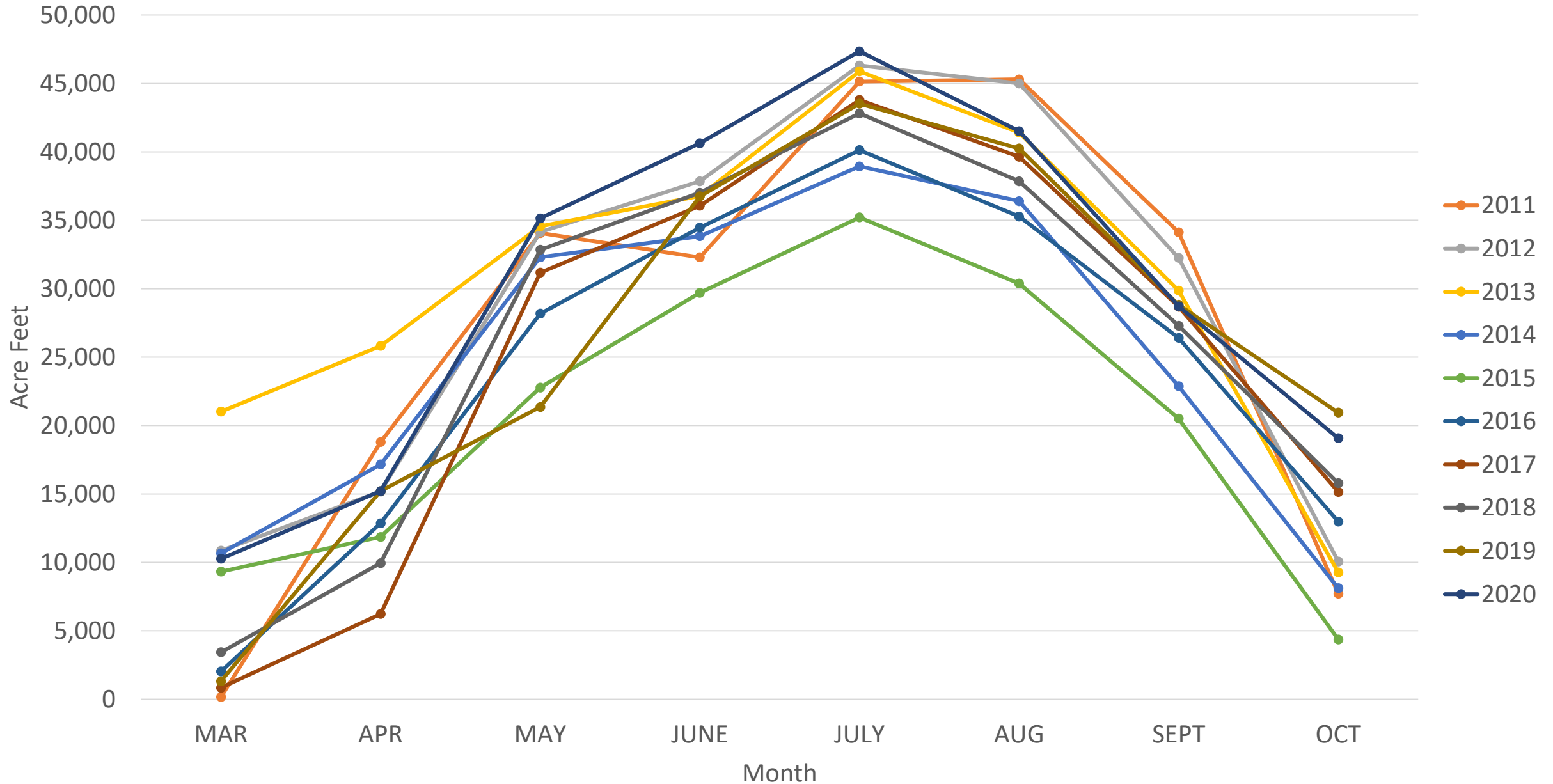
*Calendar year surface water diversions.

**Prior to 2014, volumetric billing was optional for out of district water deliveries. As such, out of district volumetric deliveries were not tracked in all cases.

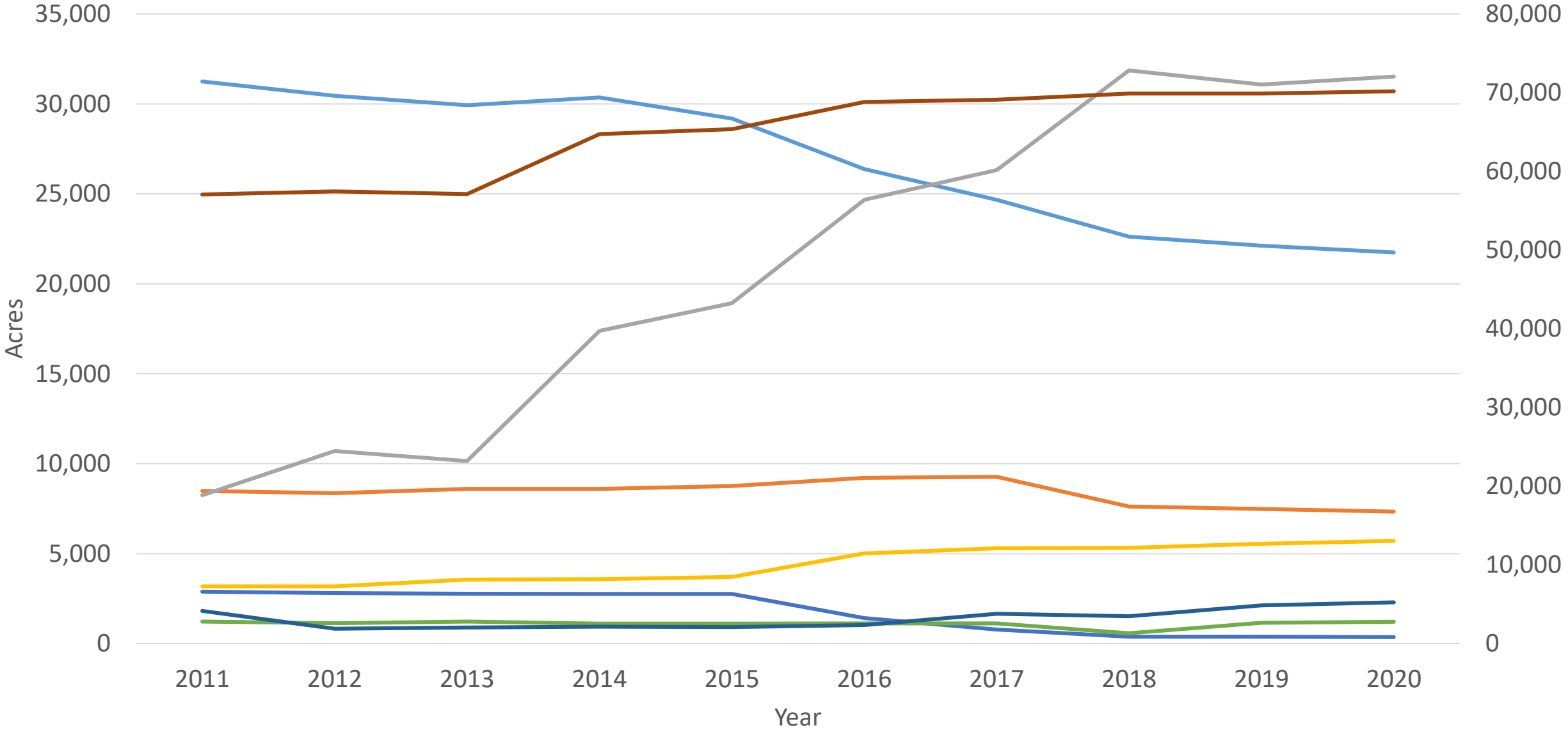
OID Surface Water Diversions by Year (10-Yr)



OID Surface Water Diversions by Month (10-Yr)

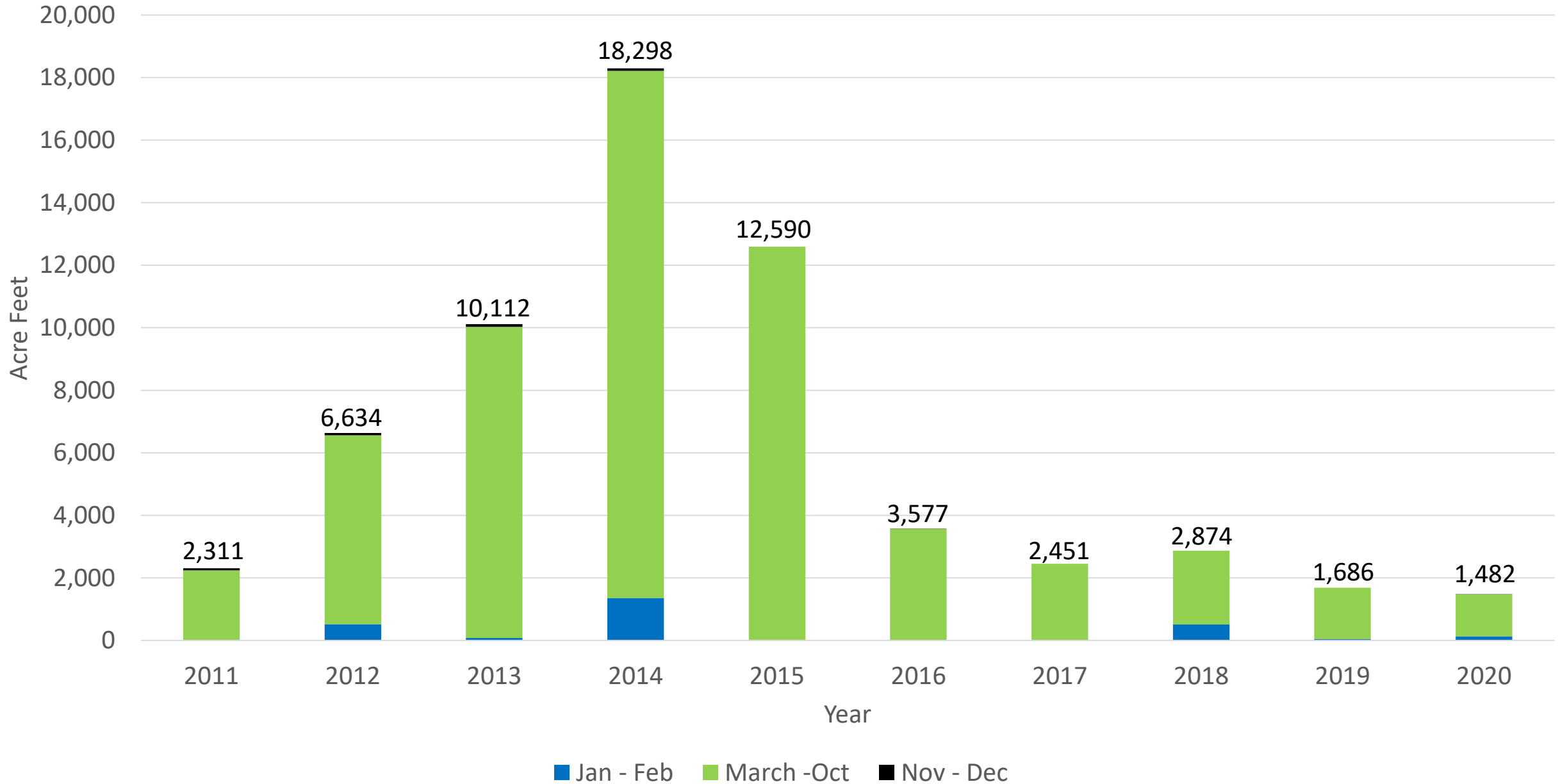


OID Crop Progression

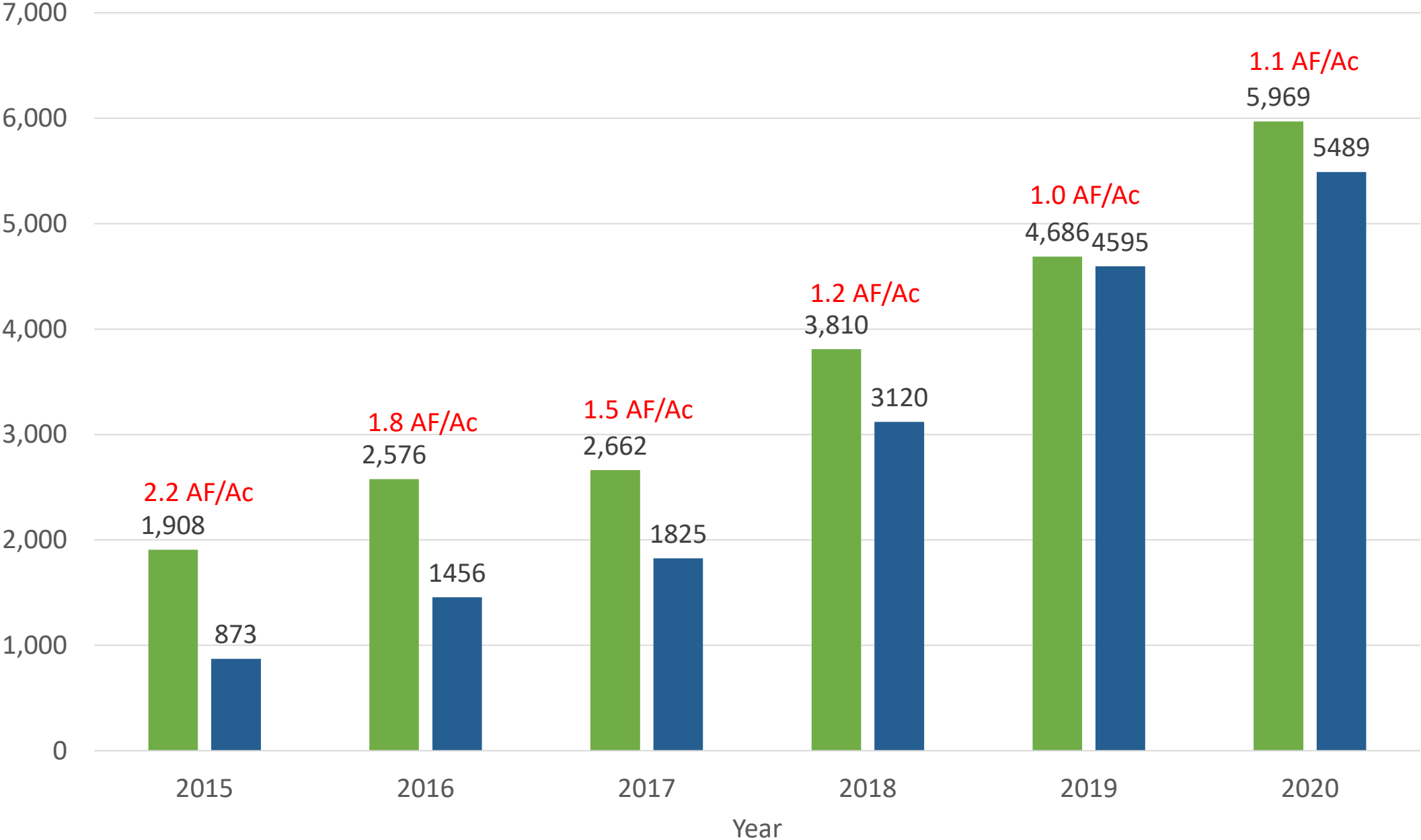


— Pasture — Oats and Corn — Almonds — Walnuts — Rice — Other — Idle — Total

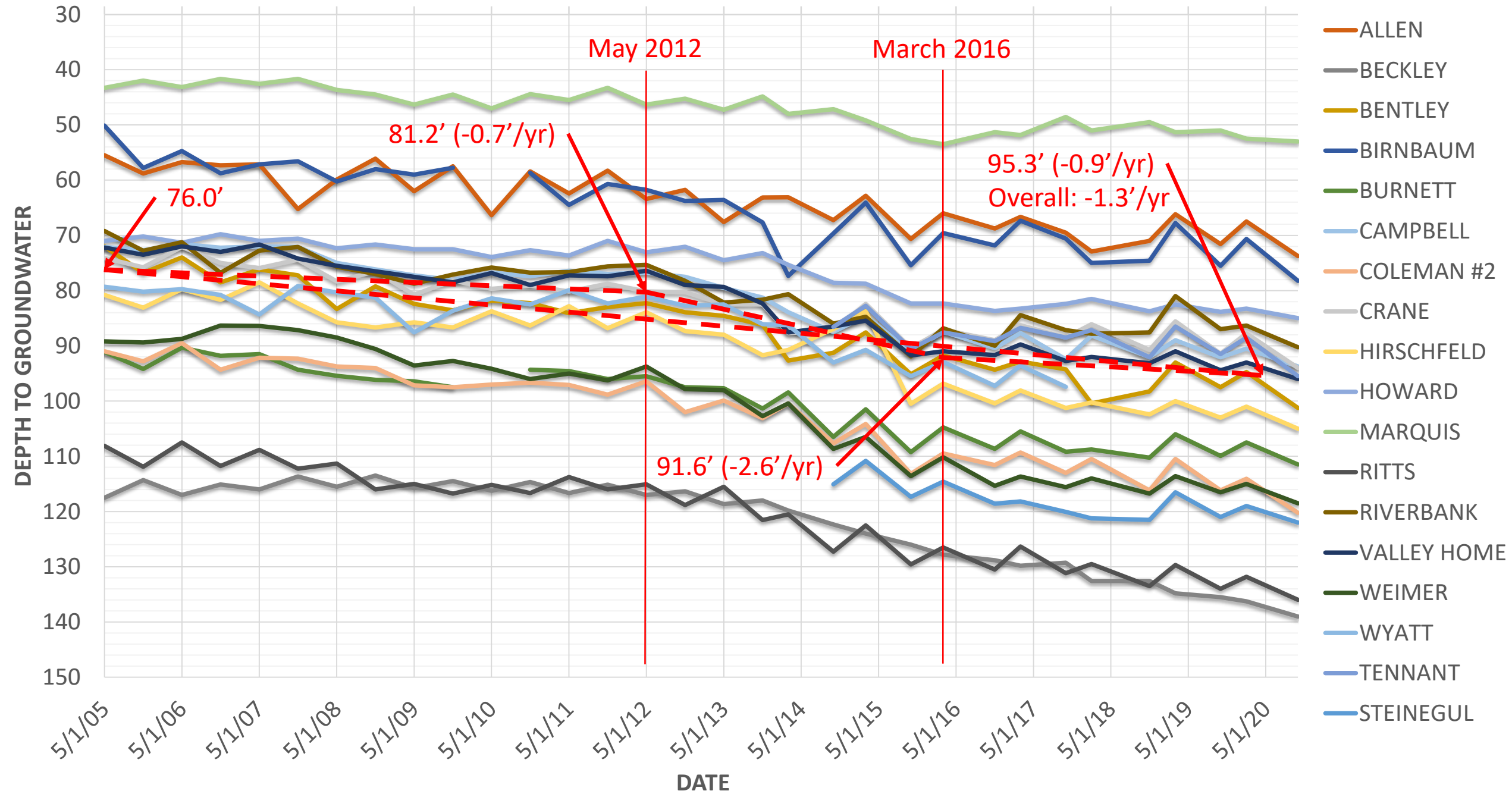
OID GW Pumping (10-Yr)



Out of District Water Deliveries



OID Groundwater Levels (Excluding East Side)



OID Groundwater Levels (East Side)

