

District Surface Water Use and Deep Well Production Update

Eric Thorburn, P.E.
Water Operations Manager/District Engineer
April 5, 2022

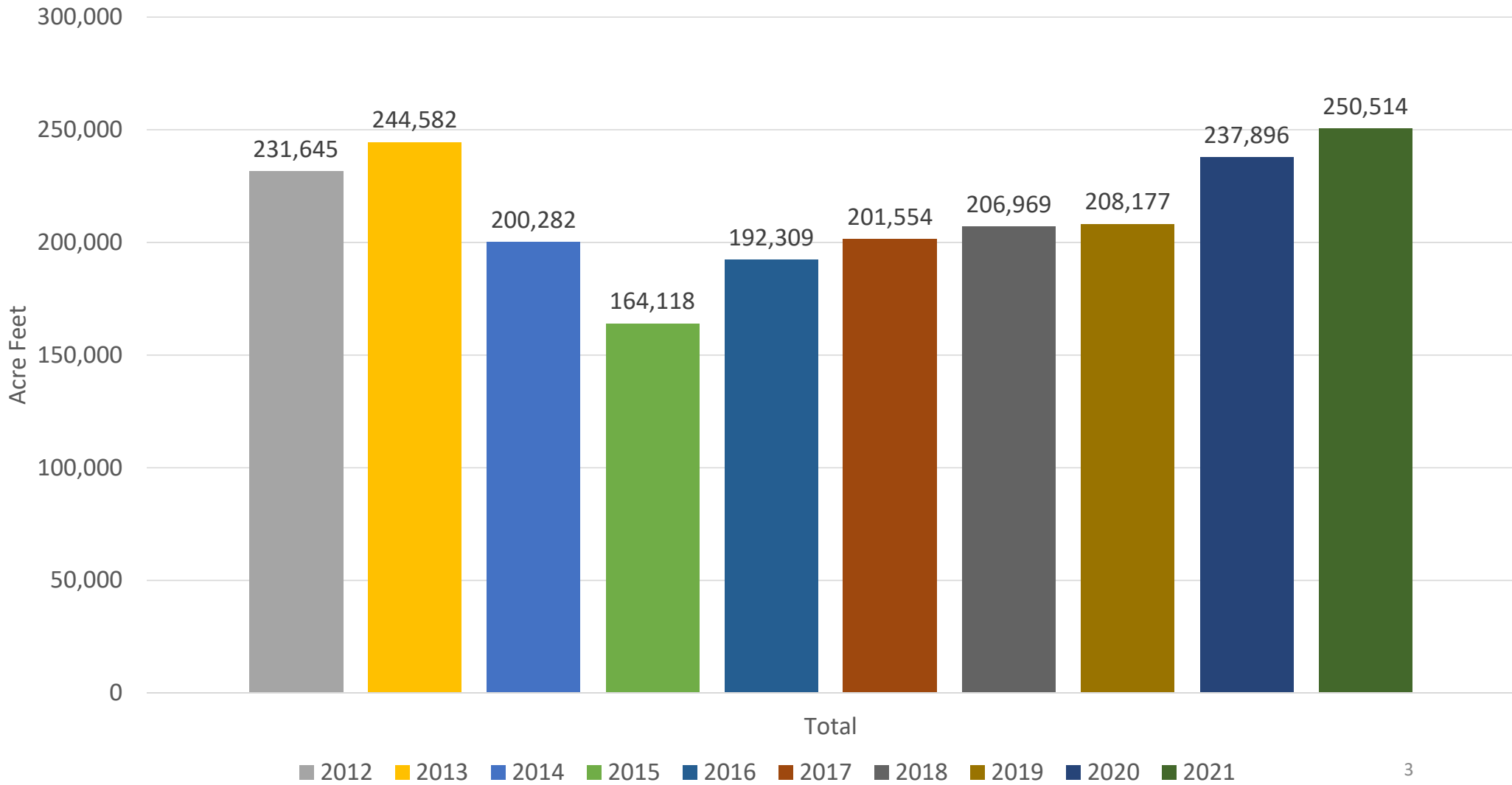
OID SURFACE WATER USE AND DEEP WELL PRODUCTION SUMMARY

Year	*Surface Water Diversions	October Surface Water Diversions	District Groundwater Pumping	Out of District Water Use
2020	237,896	19,077	1,482	5,969
2021	250,514	14,579	2,488	4,673
Avg. 2012-21	213,805	13,032	6,219	**
Avg. 2017-21	221,022	17,105	2,196	3,755

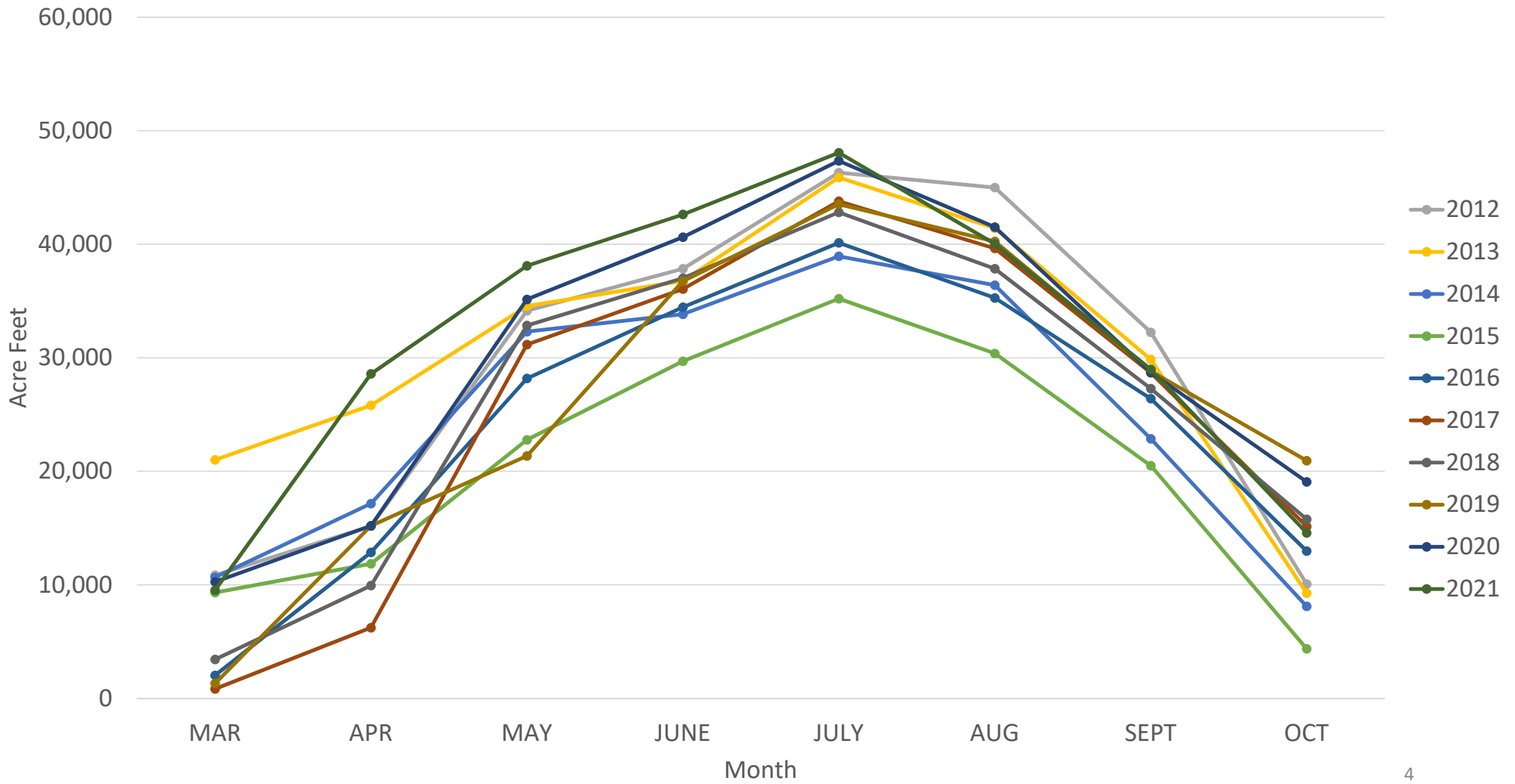
*Calendar year surface water diversions.

**Prior to 2014, volumetric billing was optional for out of district water deliveries. As such, out of district volumetric deliveries were not tracked in all cases.

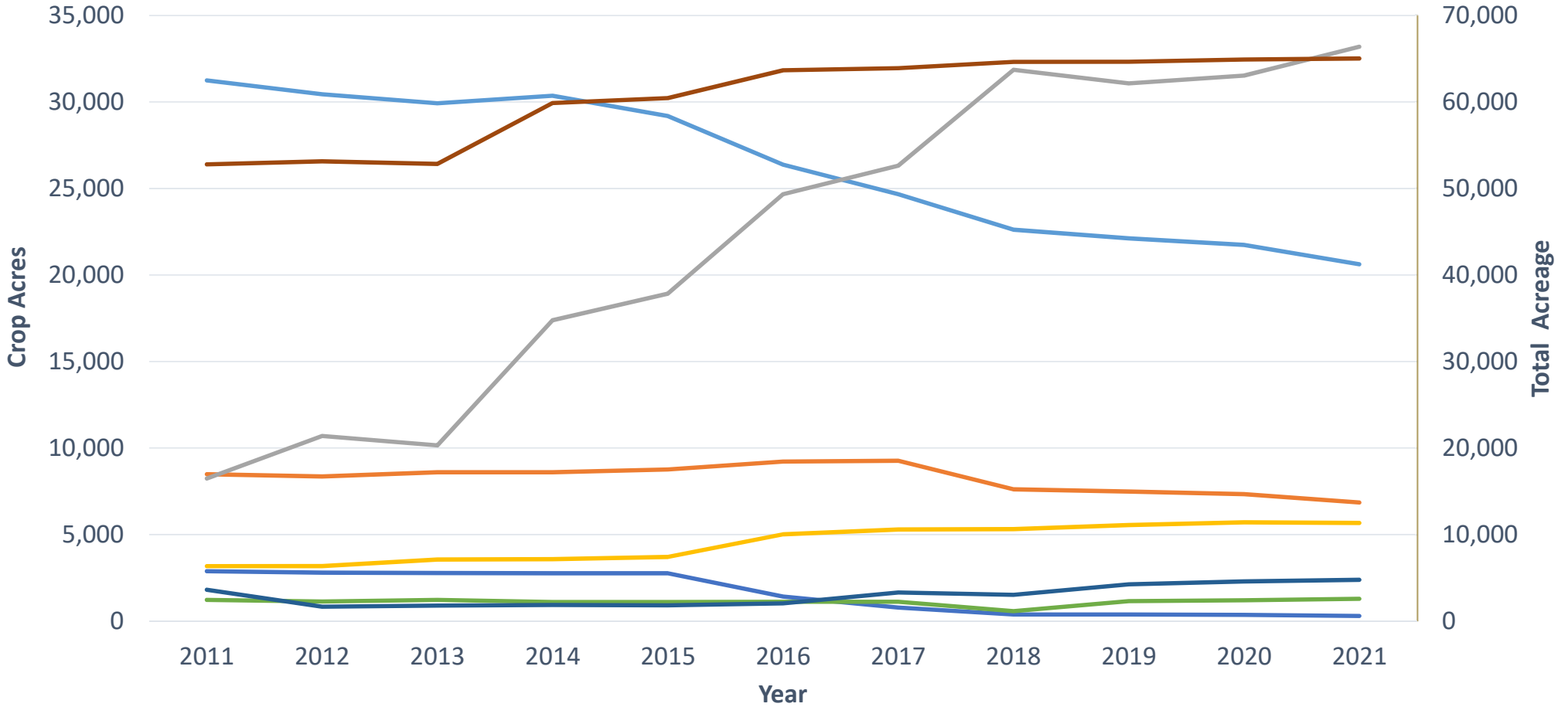
OID Surface Water Diversions by Year (10-Yr)



OID Surface Water Diversions by Month (10-Yr)

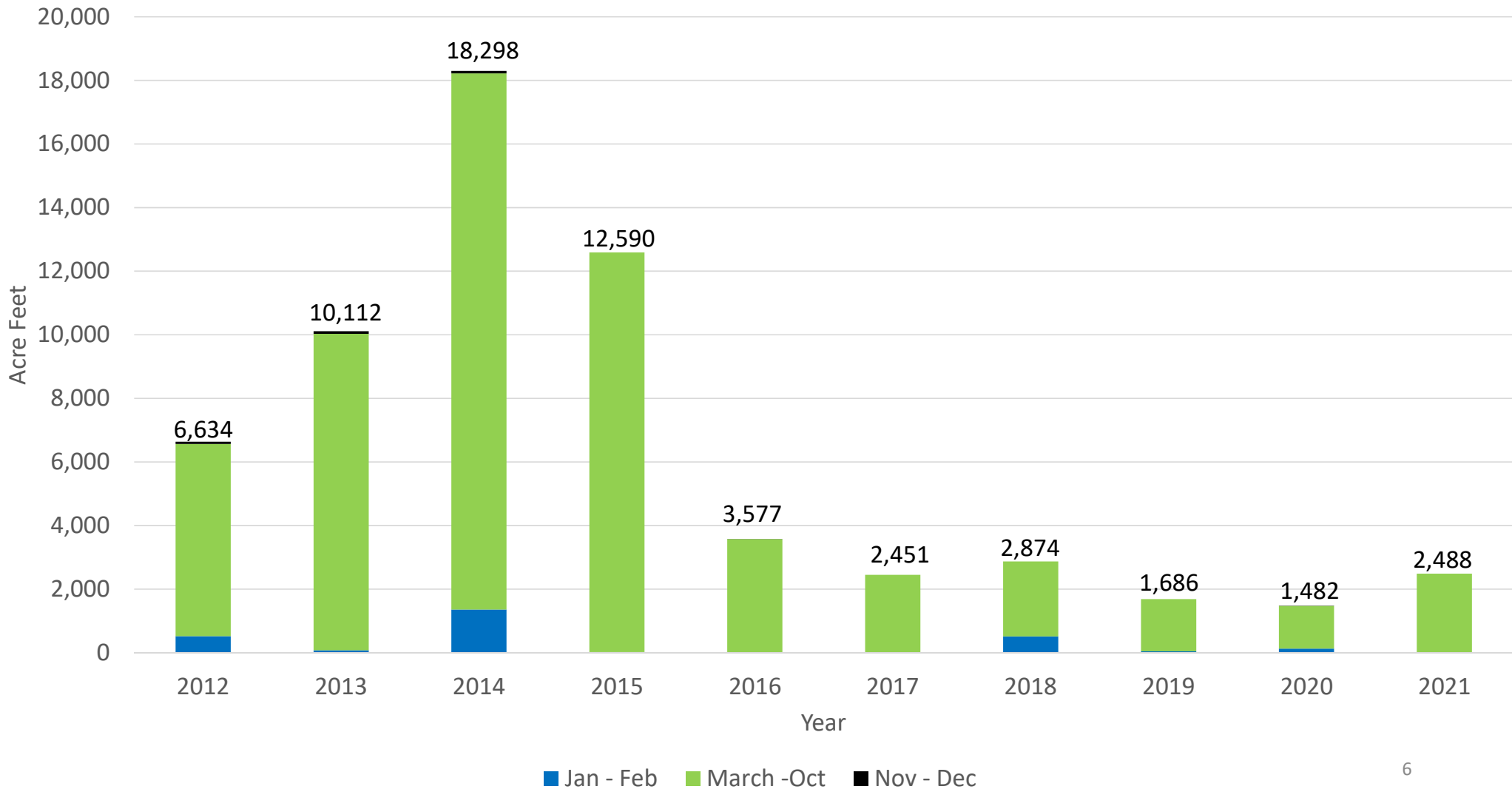


10- Yr OID Crop Progression

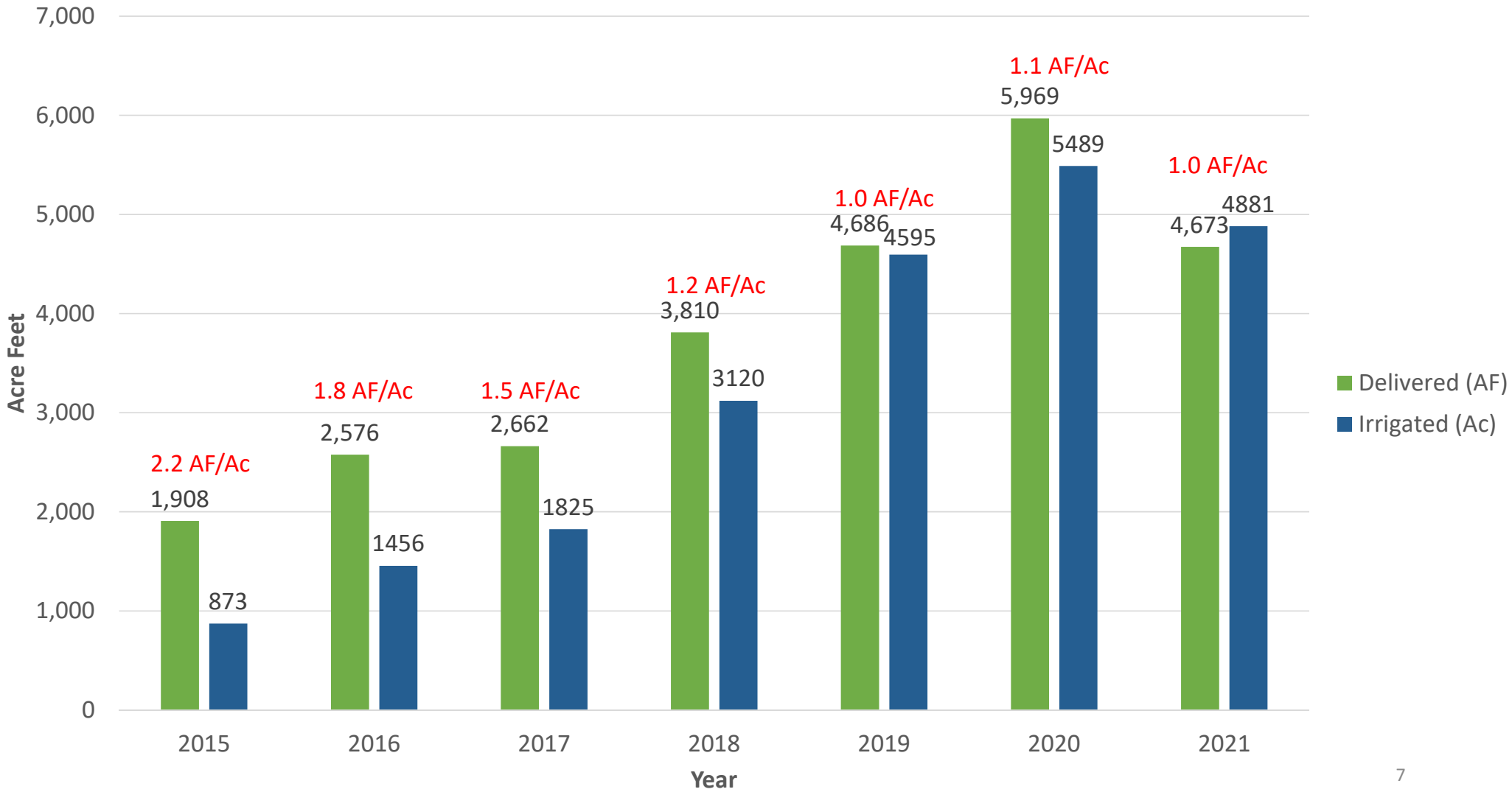


— Pasture
 — Oats and Corn
 — Almonds
 — Walnuts
 — Rice
 — Other
 — Idle
 — Total Crop Acreage (92.5%)⁵

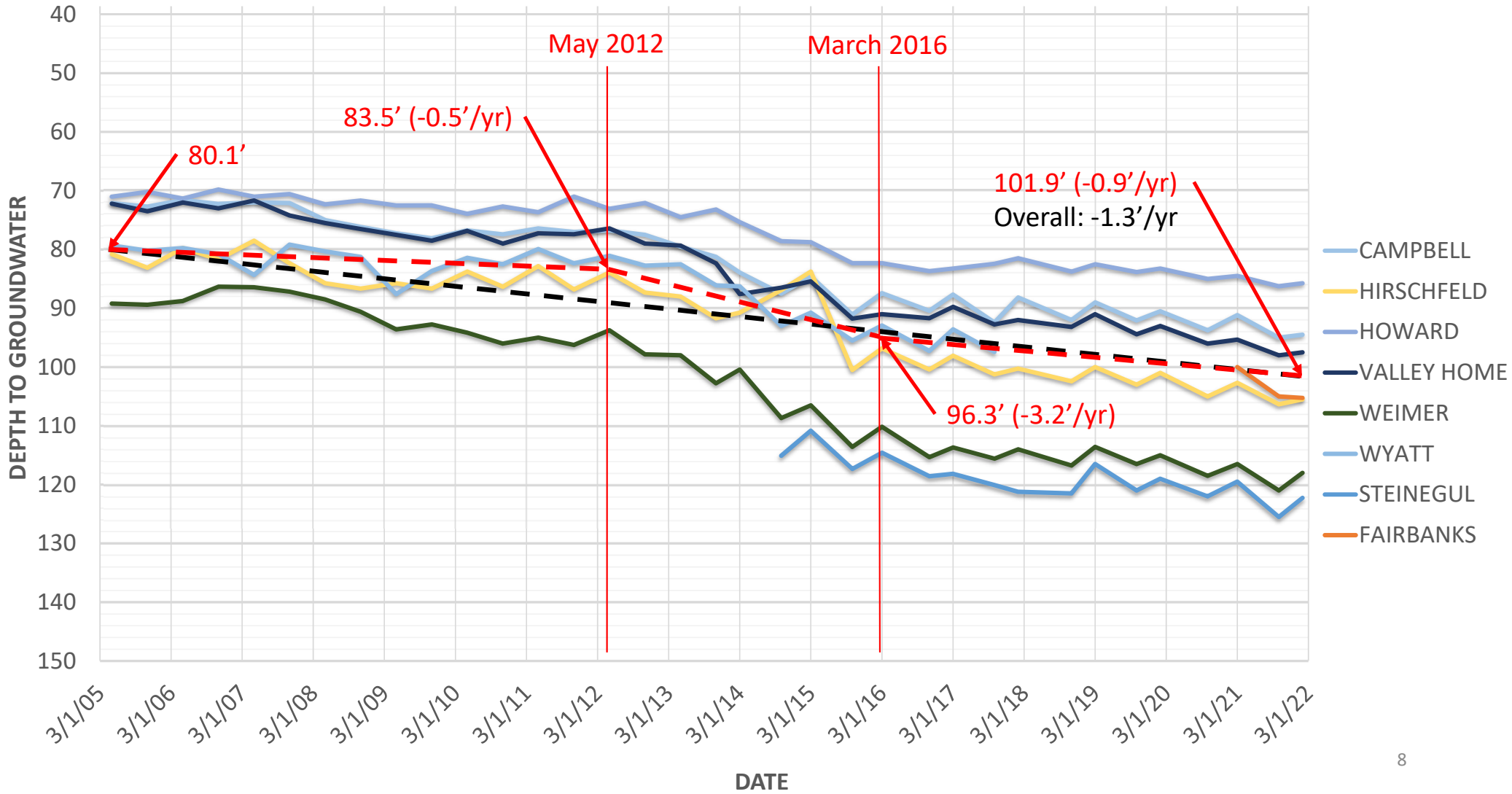
OID GW Pumping (10-Yr)



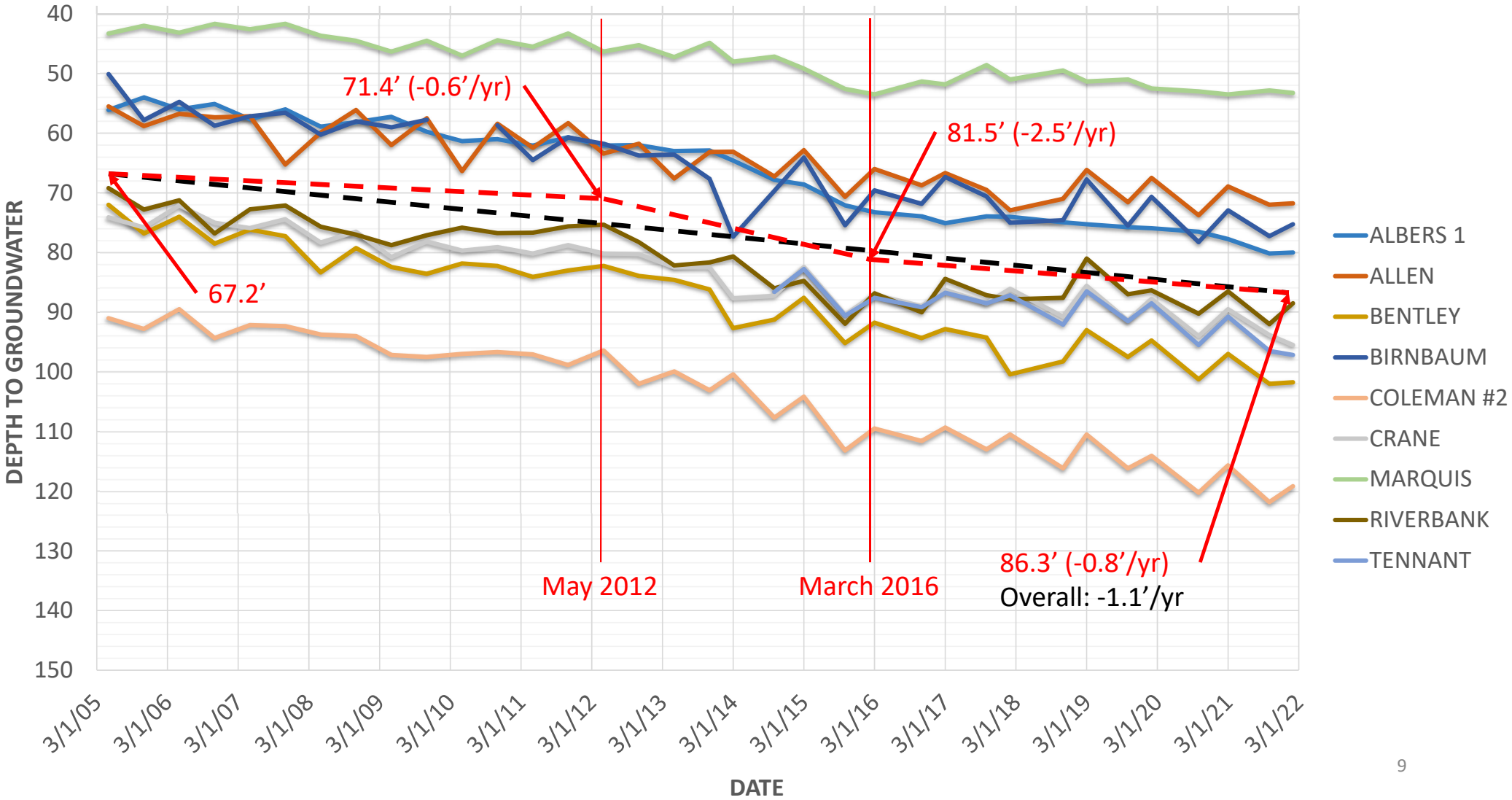
Out of District Water Deliveries



OID DW & CASGEM Sites - ESJ Subbasin



OID DW & CASGEM Sites - Modesto Subbasin



OID DW & CASGEM Sites - Eastside

