



District Surface Water Use, Deep Well Production and SGMA Update

Eric Thorburn, P.E.
Water Operations Manager/District Engineer
March 7, 2023

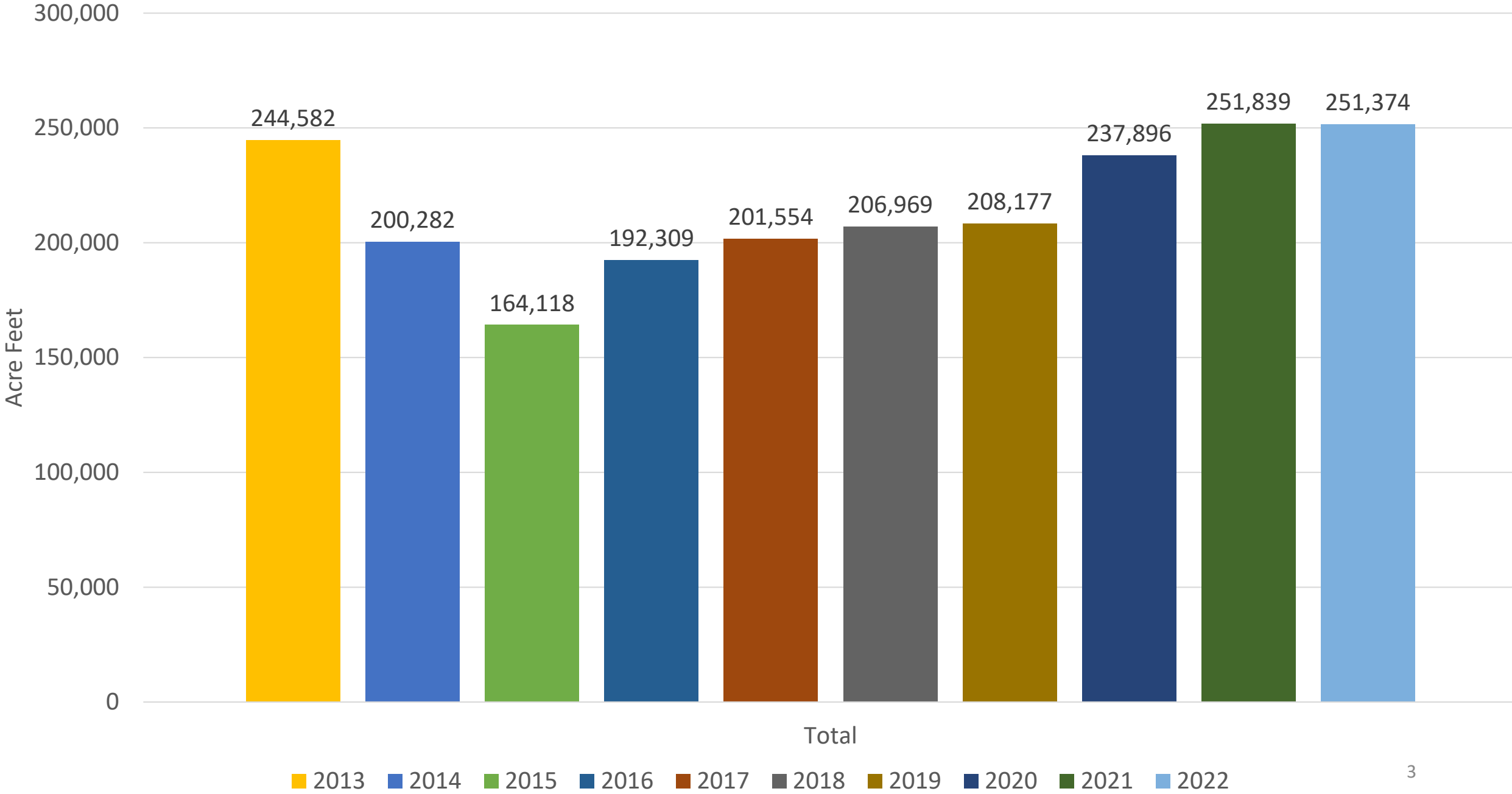
OID SURFACE WATER USE AND DEEP WELL PRODUCTION SUMMARY

Year	*Surface Water Diversions	October Surface Water Diversions	District Groundwater Pumping	Out of District Water Use
2021	251,839	15,904	2,488	4,673
2022	251,374	20,781	1,579	1,883
Avg. 2013-22	215,910	14,236	5,714	**3,521
Avg. 2018-22	231,251	18,497	2,022	4,204

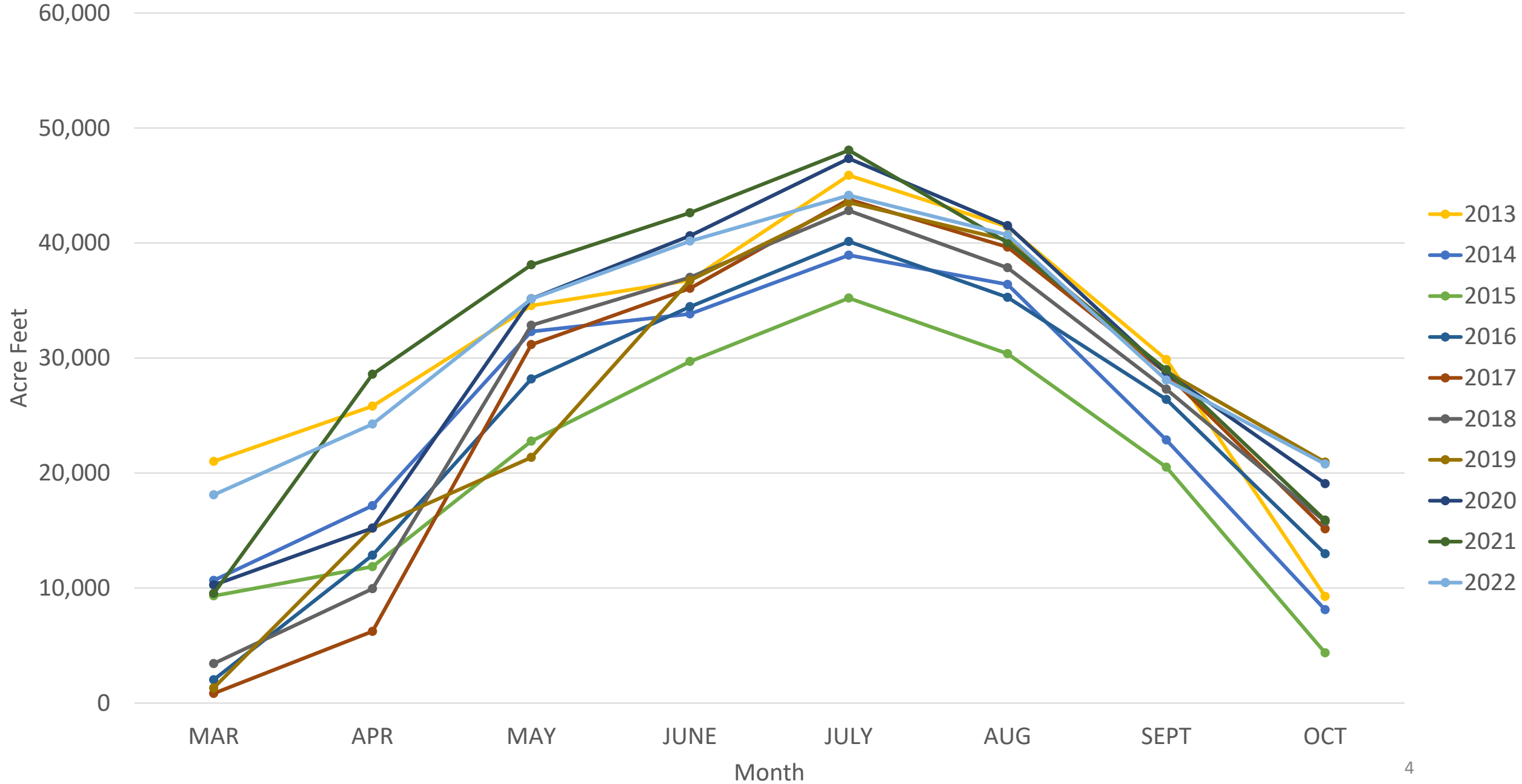
*Calendar year surface water diversions.

**Prior to 2014, volumetric billing was optional for out of district water deliveries. As such, out of district volumetric deliveries were not tracked in all cases. This represents the Avg. 2015-22.

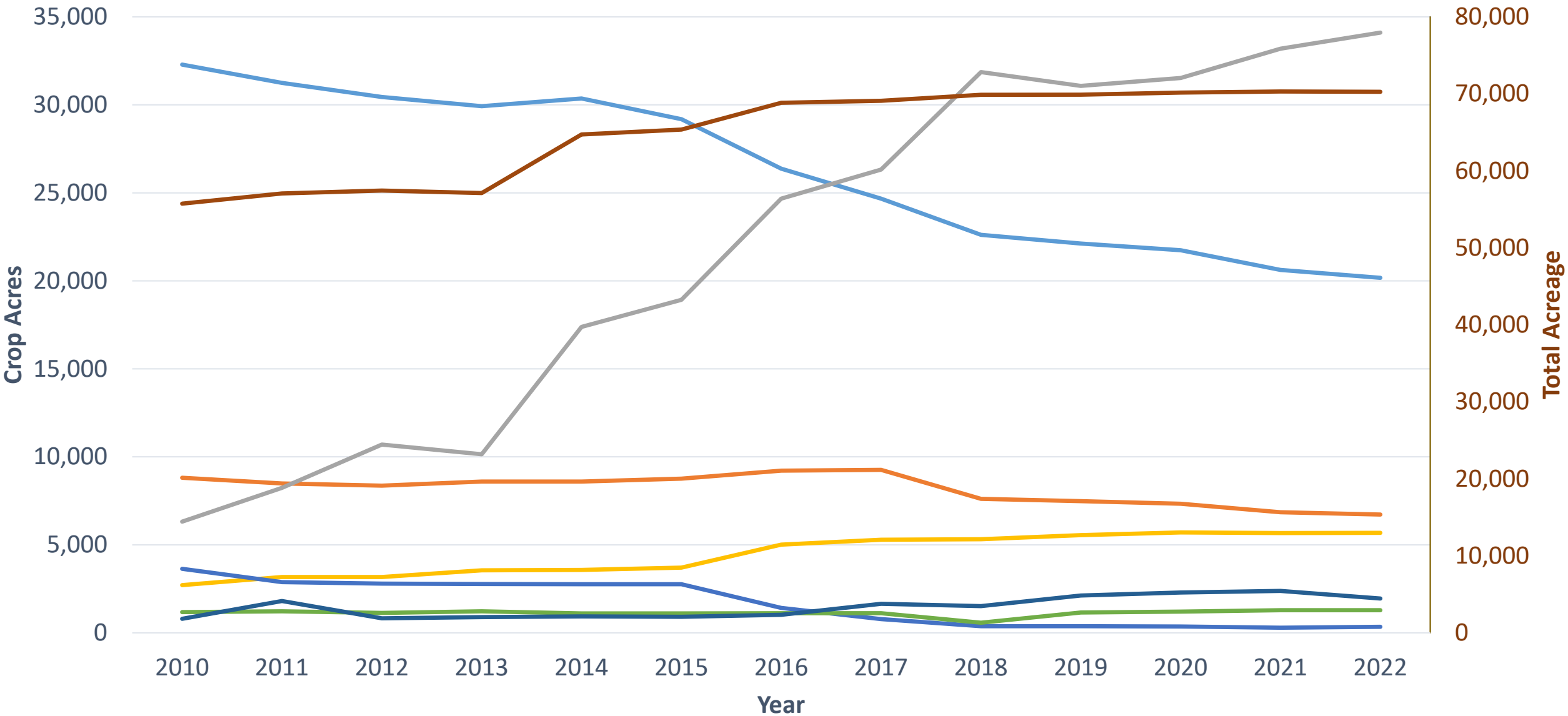
OID Surface Water Diversions by Year (10-Yr)



OID Surface Water Diversions by Month (10-Yr)

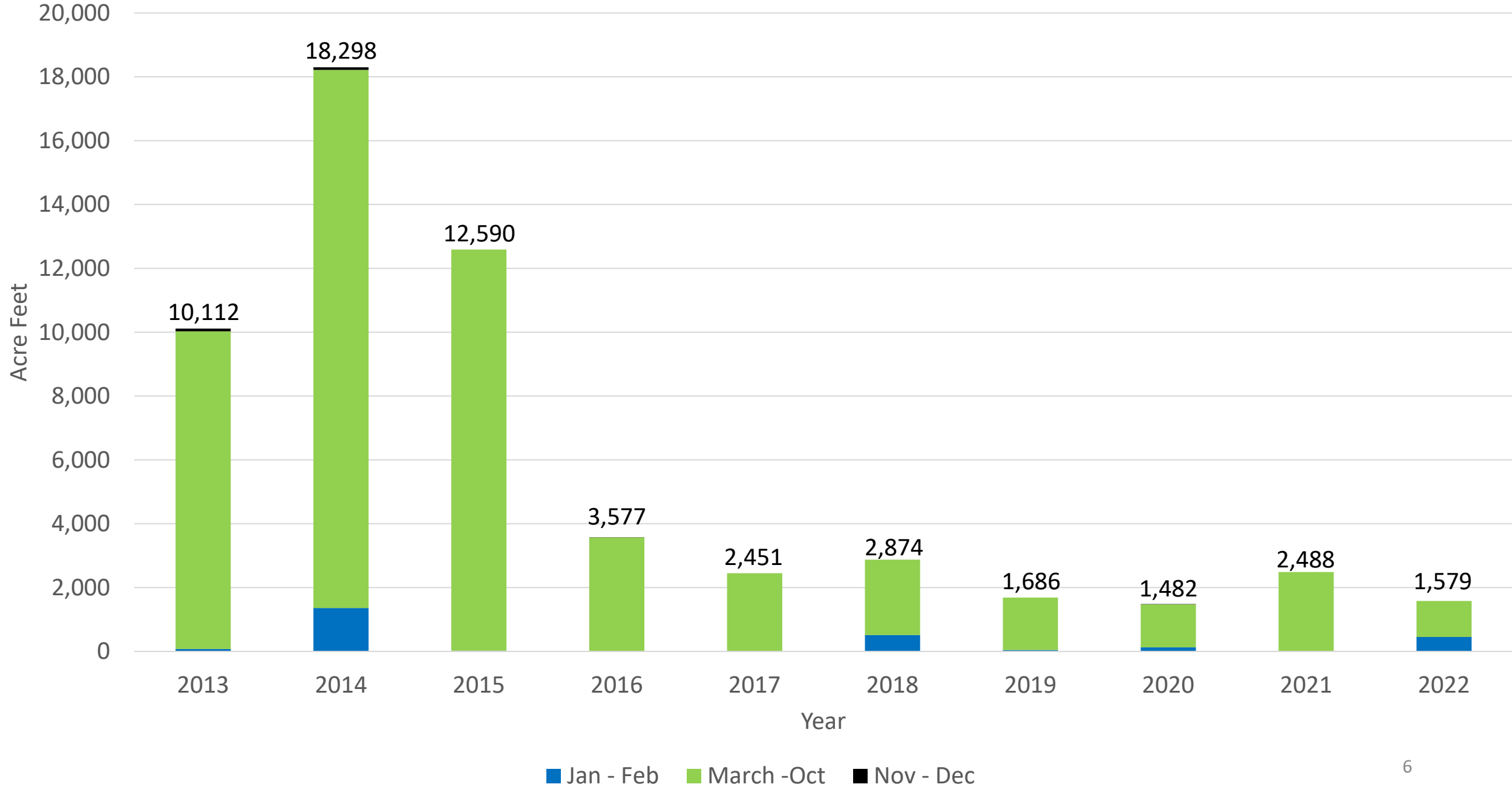


OID Crop Progression

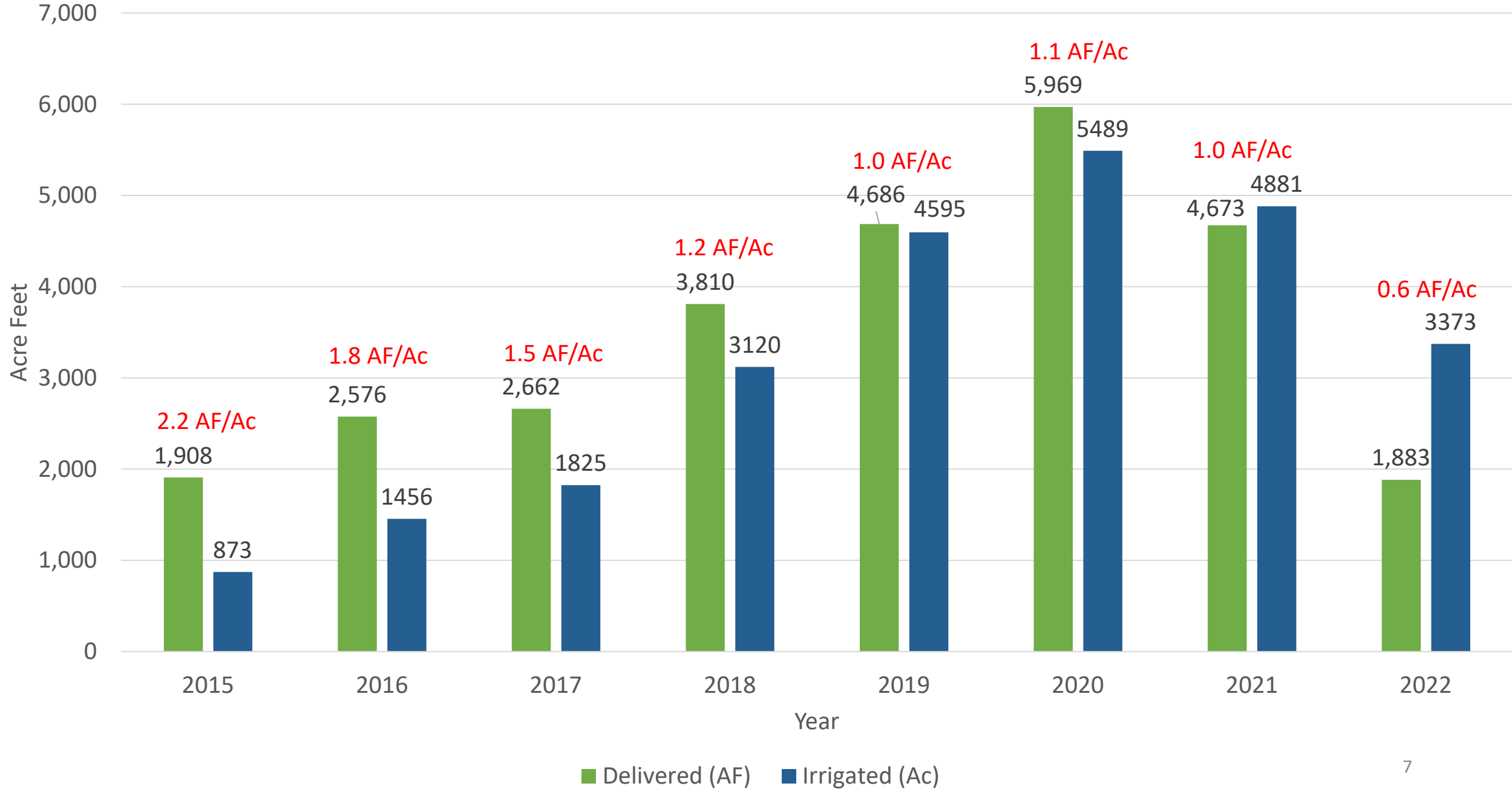


— Pasture
 — Oats and Corn
 — Almonds
 — Walnuts
 — Rice
 — Other
 — Idle
 — Total

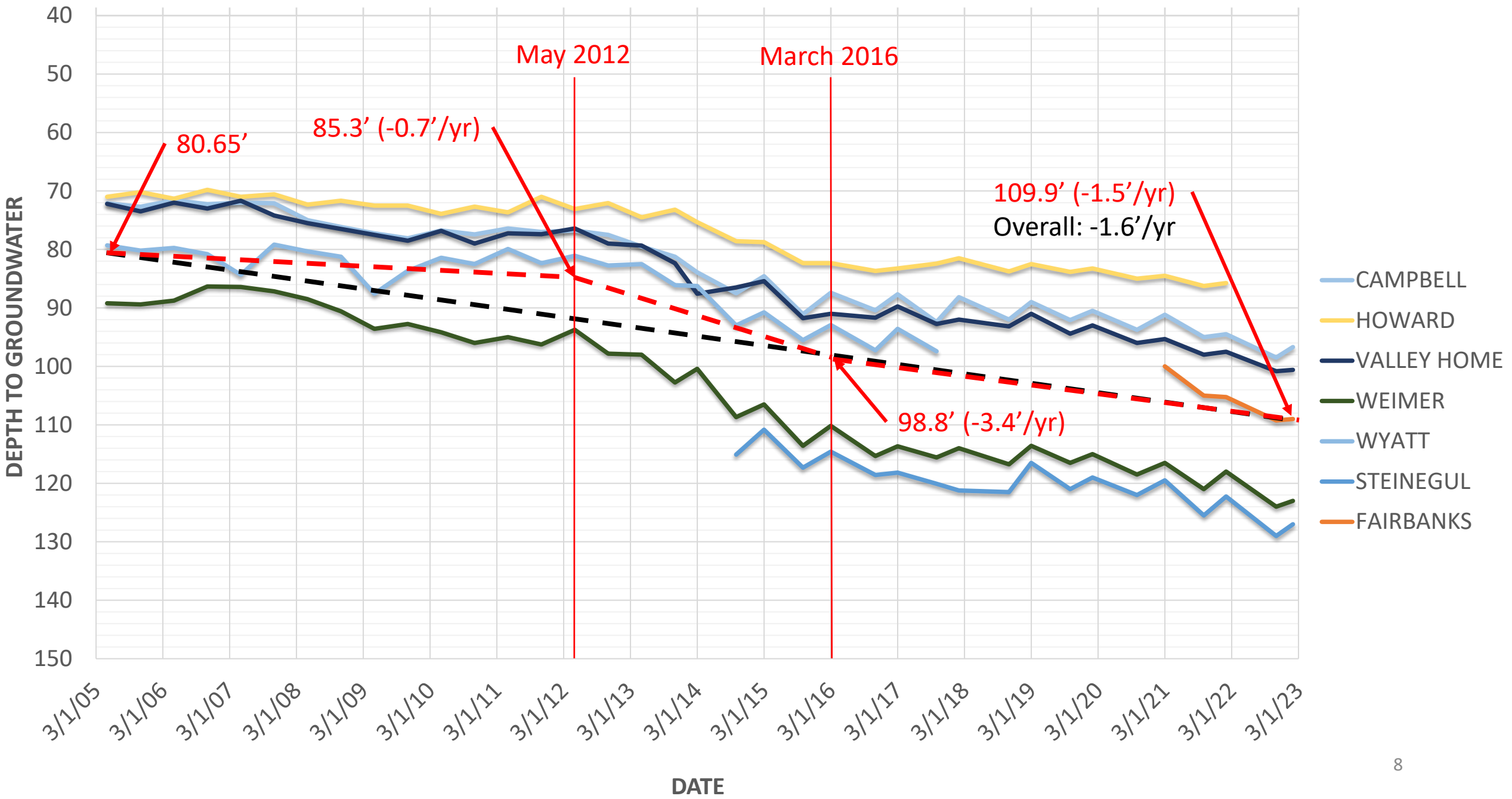
OID GW Pumping (10-Yr)



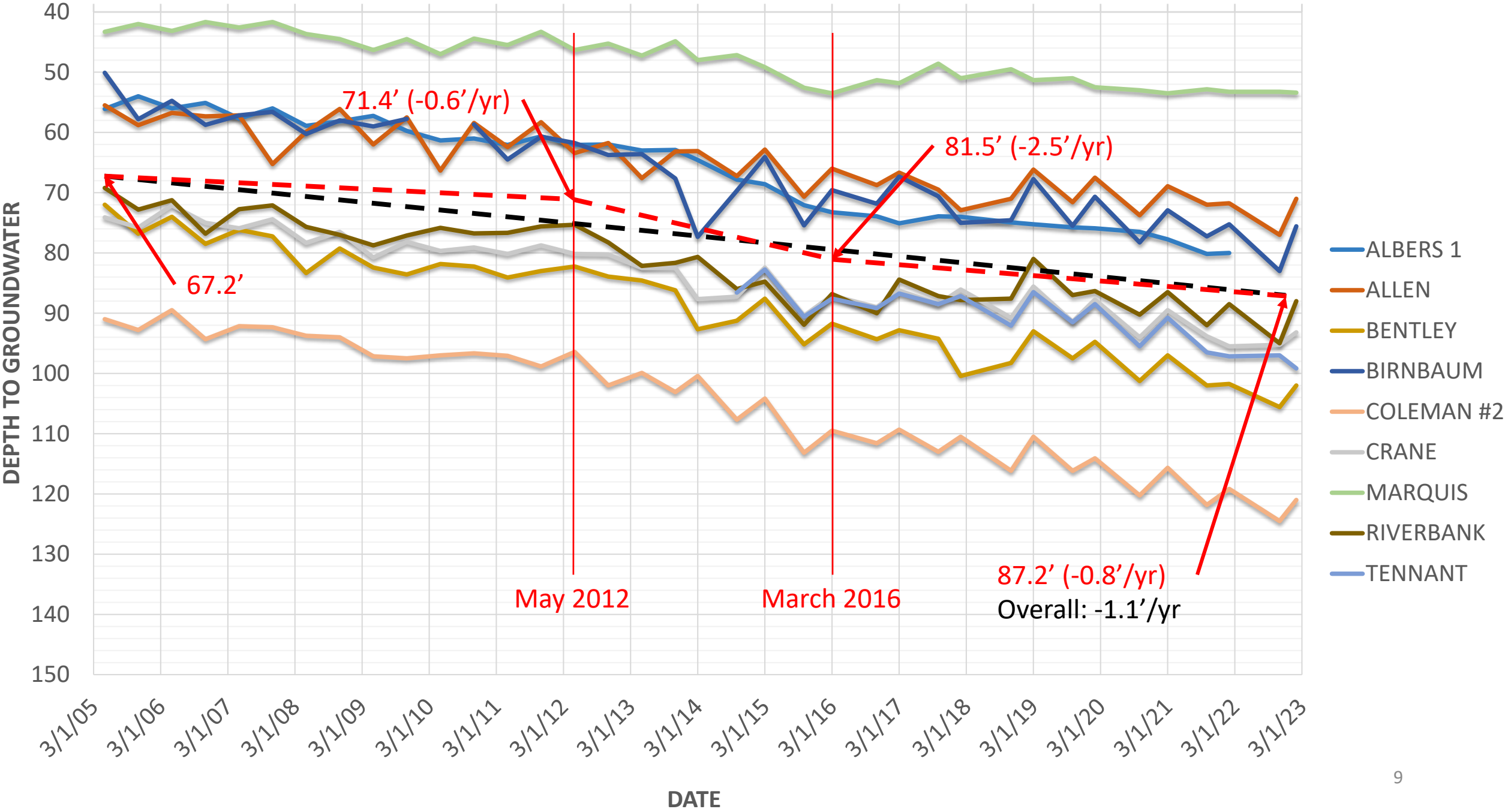
Out of District Water Deliveries



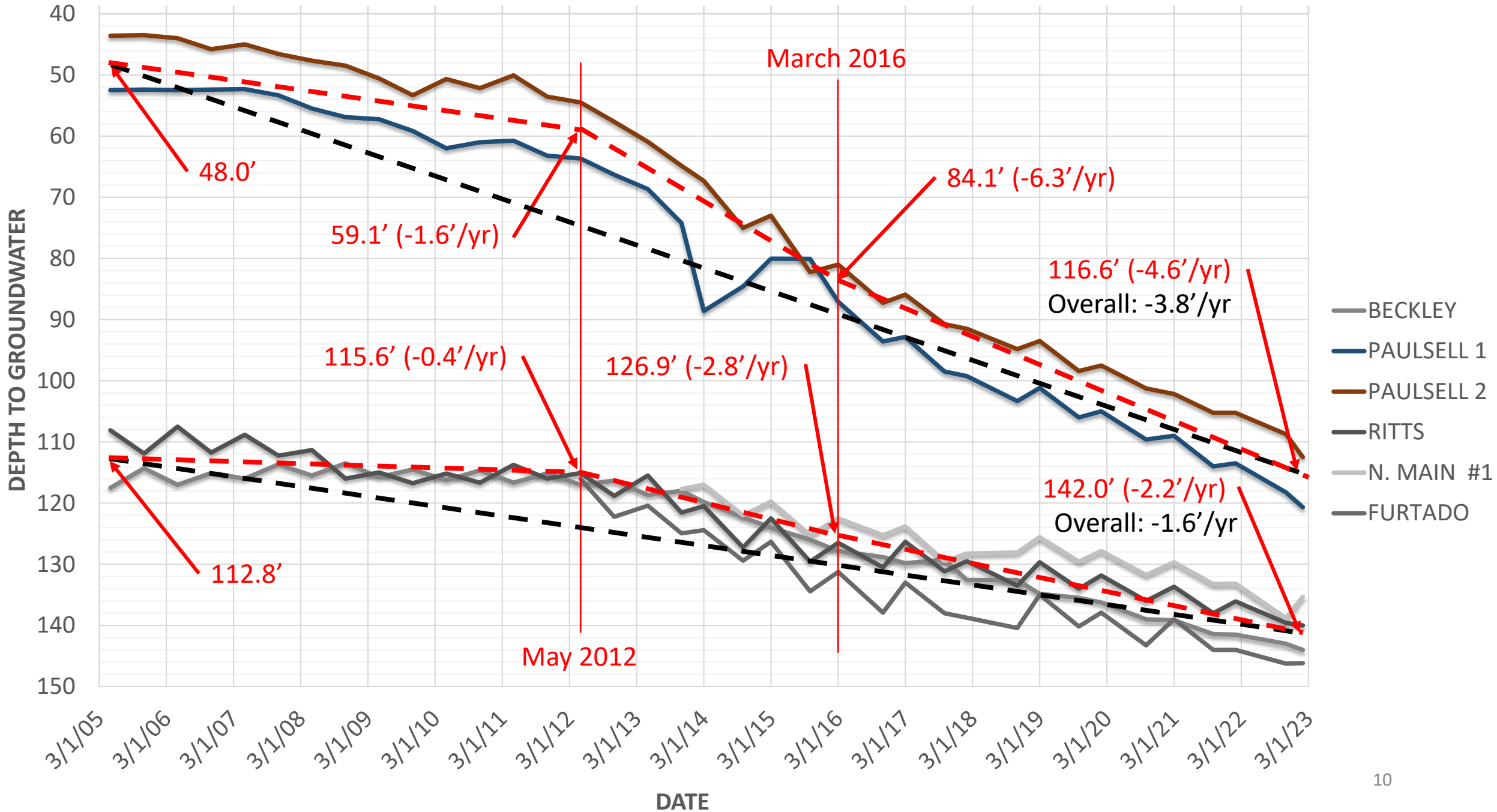
OID DW & CASGEM Sites - ESJ Subbasin



OID DW & CASGEM Sites - Modesto Subbasin



OID DW & CASGEM Sites - Eastside

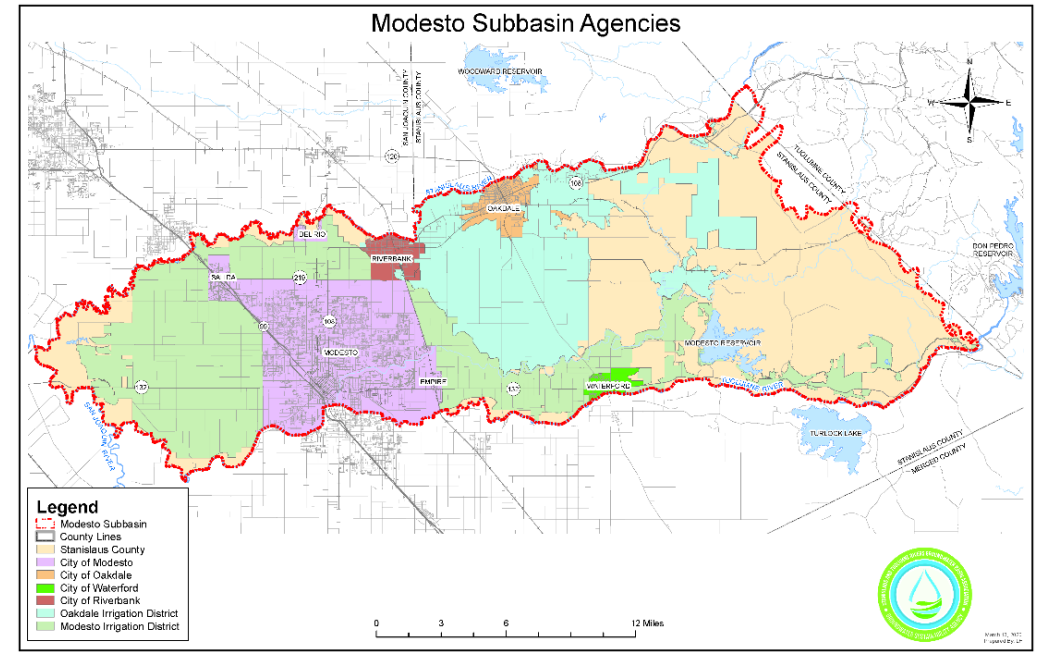


Sustainable GW Management Act (SGMA) Update

Modesto GW Subbasin

1 GSA (250k ac) - south of the Stanislaus River

- GSP submitted Jan. 2022
 - DWR has 2 years to review
- Preparing 2022 WY Annual Report (2nd) - Due April 1st
 - Change in storage = -172k AF (0.7')
 - Continued water level decline primarily in NDE
 - 81% RMWs above MTs
 - No wells below IMs
- County led NDE Modesto Subbasin landowner workshop 1 of 3 – Held Jan. 25th
 - Focused on overdraft in NDE and proposed projects
 - Workshop #2 will focus on MAs in other subbasins – Anticipated +/-May 2023
- Projects
 - OID 10-Yr OOD Water Sale Program – Agreement approved Feb. 7th
 - \$18.6M SGM Implementation Grant Application – OID Paulsell Lat. Expansion
 - 82 applications for \$780M total submitted - \$200M available
 - Awards in August 2023



Sustainable GW Management Act (SGMA) Update

Eastern San Joaquin GW Subbasin 16 GSAs (707k ac) - north of the Stanislaus River

- GSP submitted Jan. 2020 (revised June 2022)
 - Recommended for approval by DWR – March 3rd
- Preparing 2022 WY Annual Report (4th) - Due April 1st
 - Change in storage = -122k AF
 - Continued water level decline
 - No wells below the MTs
- Projects
 - 10-year OID & SSJID transfer to SEWD – IS/ND public review period closes March 17th
 - Up to 20k AF in dry years, 10k AF in critically dry years

